



# Workspace



A software platform for unleashing intellectual property

CSIRO Data61 Decision Sciences program

[www.data61.csiro.au](http://www.data61.csiro.au)

Workspace is a proven platform for delivering software applications for commercial and research purposes. The Workspace framework provides a single environment to develop and reuse software components and libraries that are designed to be significantly beneficial to users with a wide range of skills. By streamlining the software development process, Workspace acts as a low-cost pathway to commercialise new or existing intellectual property.



## Analyse

Interactively construct and execute workflows of arbitrary complexity



## Collaborate

Single environment to develop and reuse software components and libraries



## Commercialise

Deploy workflows as stand-alone graphical applications for market consumption



## Everywhere

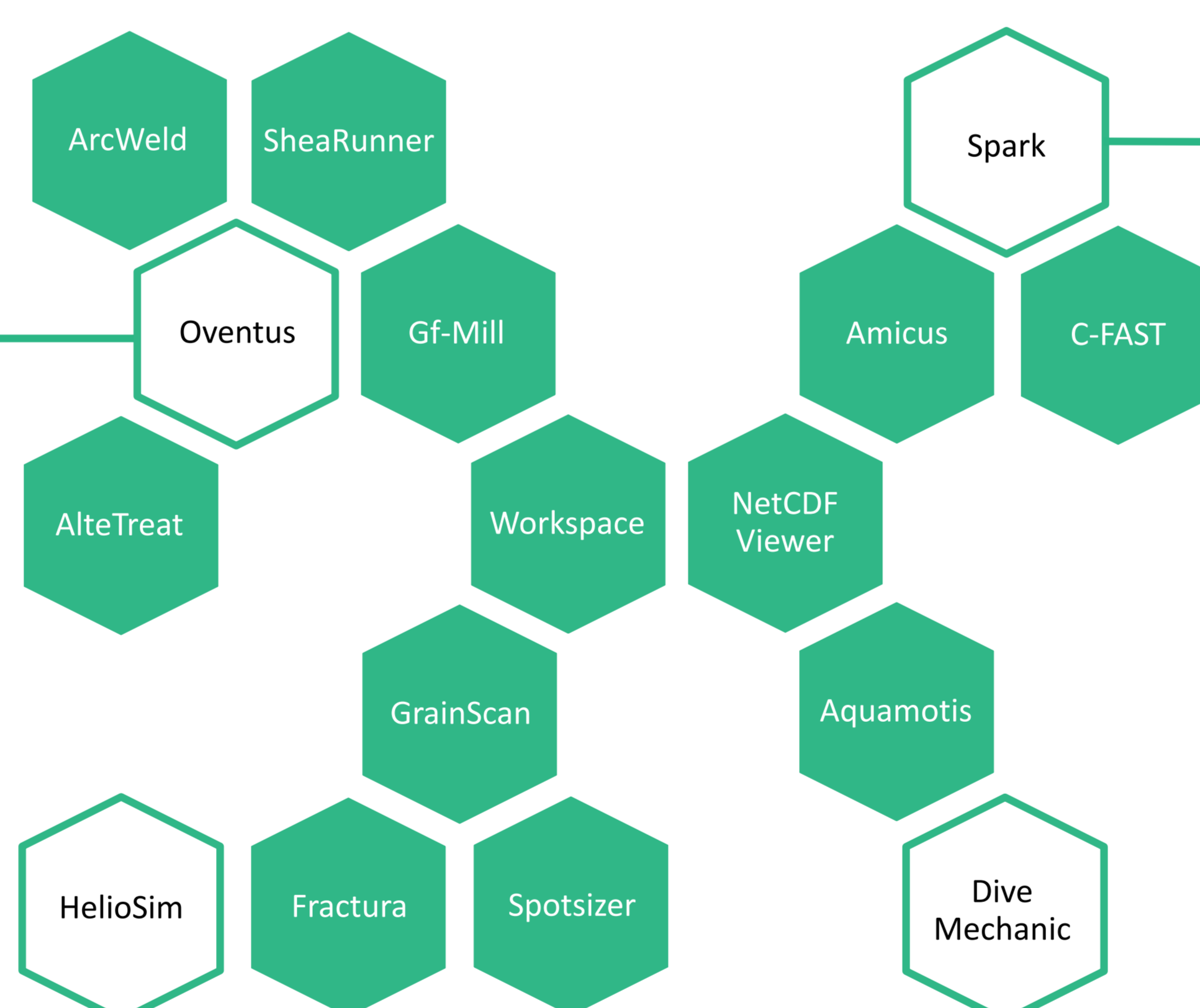
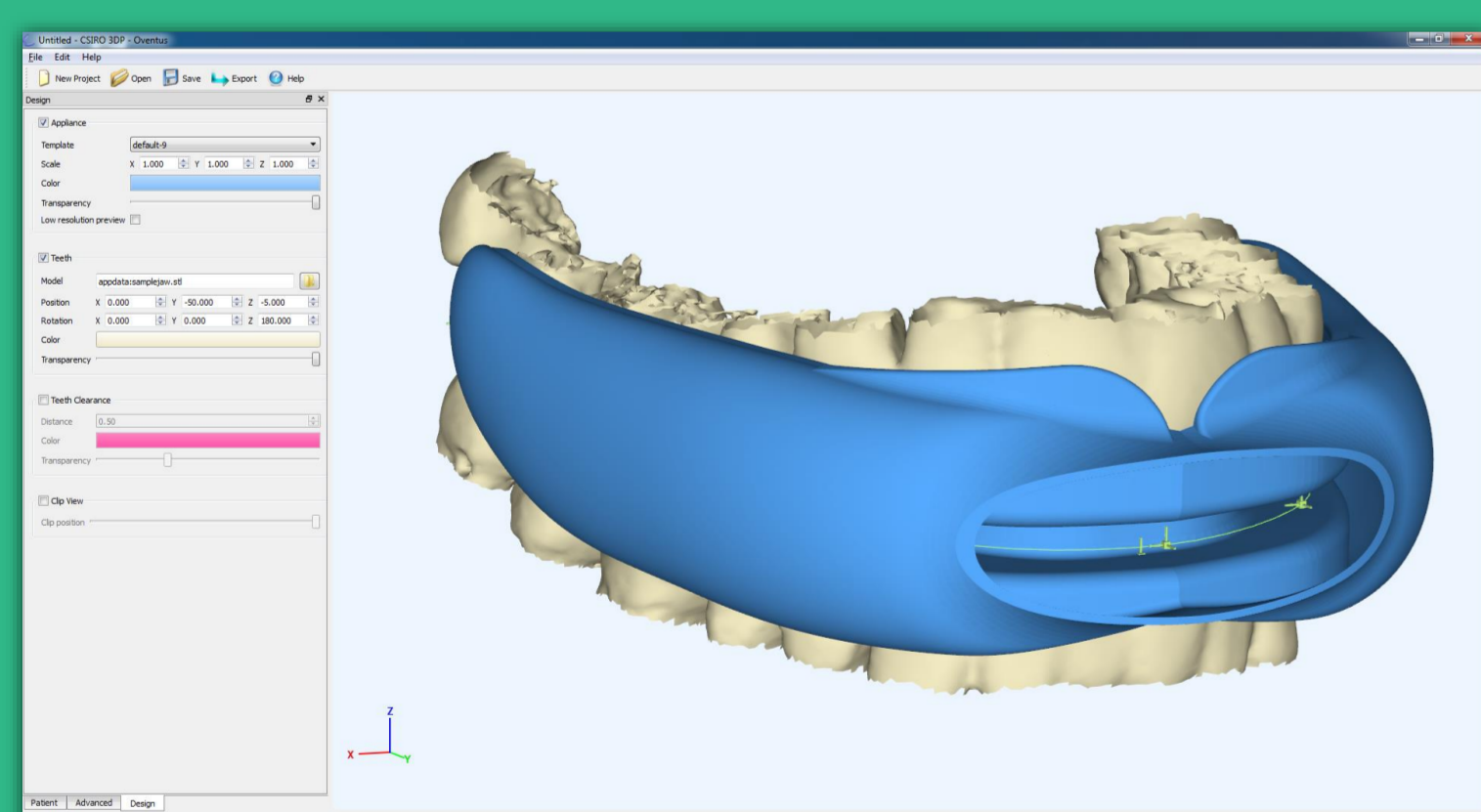
Develop, execute and share workflows for any desktop, mobile or cloud system

## The Workspace ecosystem

Since Workspace's public launch in 2014, over a dozen applications have been developed upon Workspace's expanding ecosystem of plugins

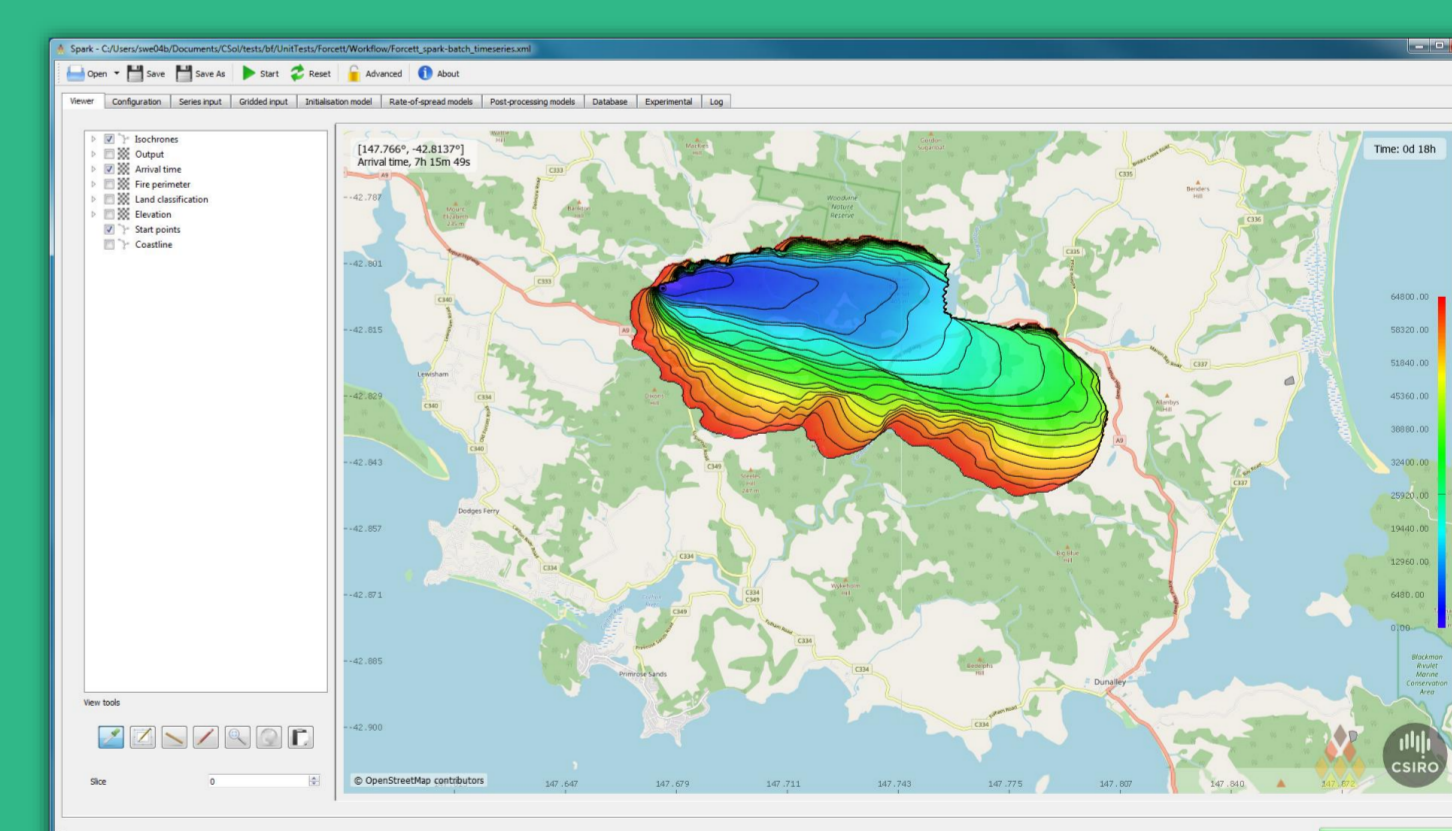
### Oventus

- Software tool for rapid customisation of a 3D printed titanium sleep apnoea device for individual patients
- Software has paved the way to scaling up to commercial mass-market delivery
- Over 1000 customised Oventus Clearway Devices™ created in first 12 months of commercial use
- Collaboration between Oventus, CSIRO Data61 and Manufacturing



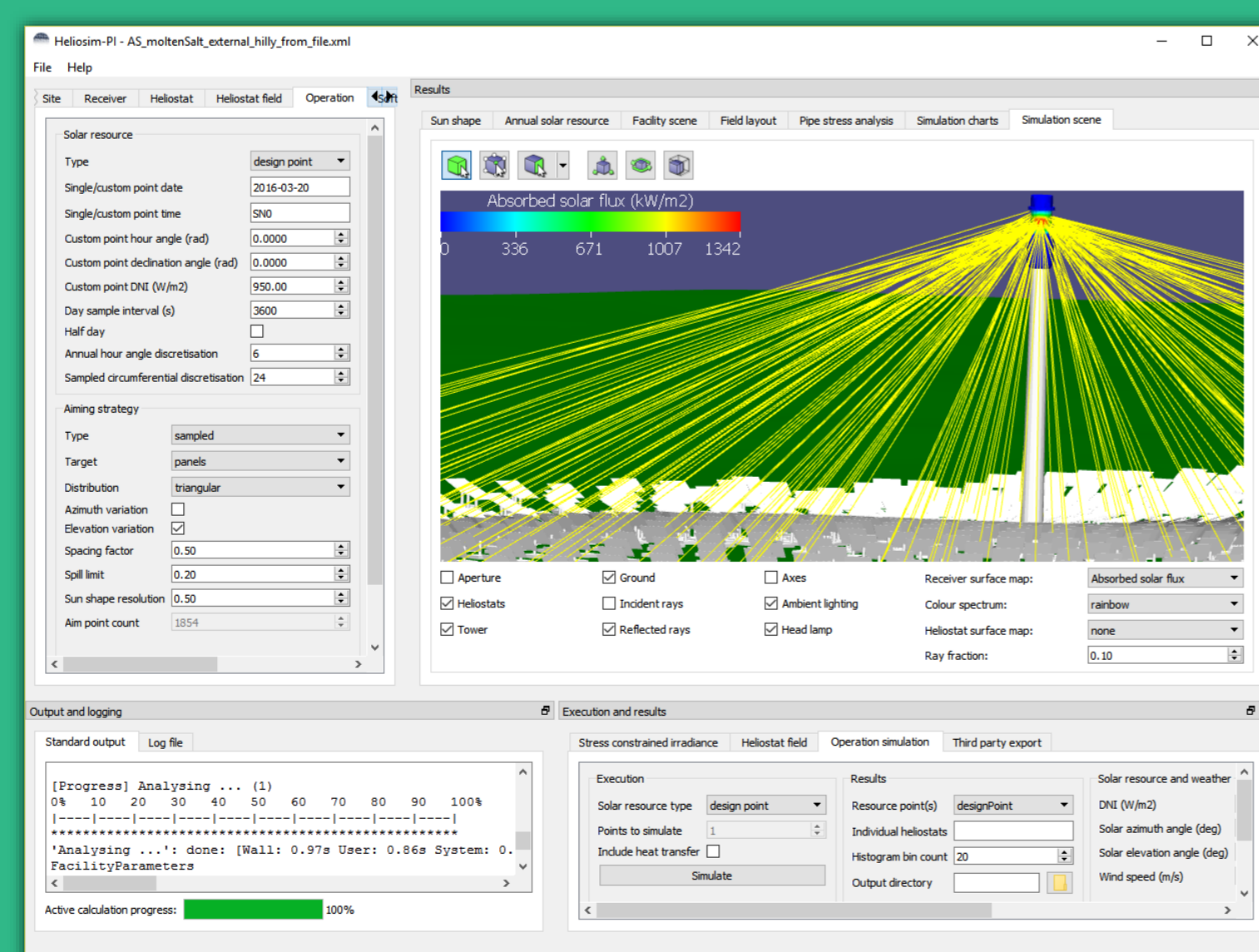
### Spark

- A fully featured bushfire simulation package with customisable fire propagation algorithms
- Augments risk assessment capabilities of emergency services, consultants and insurance providers
- Community safety through better planning of prescribed burns and evacuations
- Collaborative development between CSIRO Data61 and Land & Water



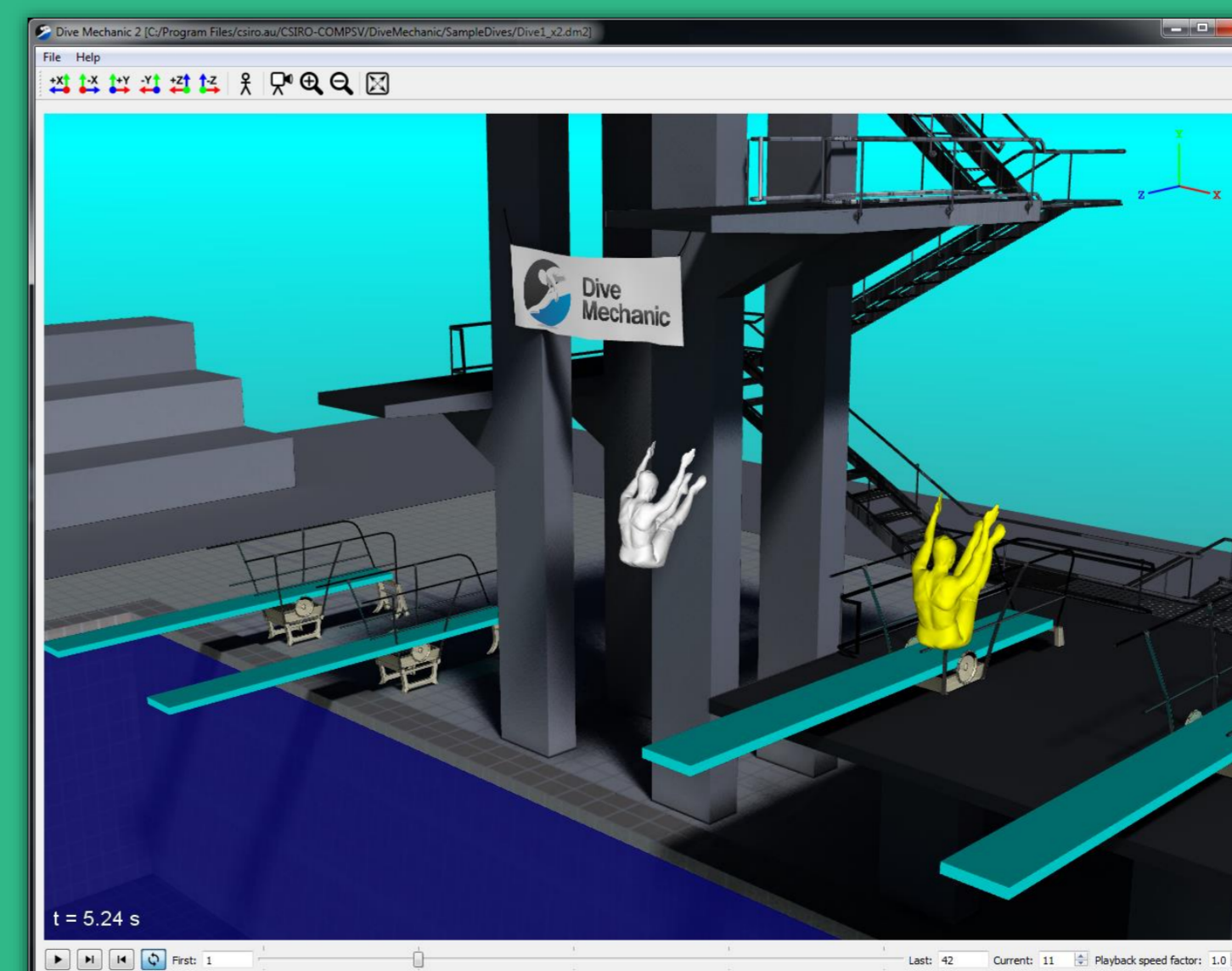
### Heliosim

- Commercial software package for the simulation and optimisation of concentrating solar thermal (CST) power plants
- GPU and multi-core accelerated ray tracing model
- Developed by CSIRO Energy as part of an Australian Renewable Energy Agency (ARENA) project



### Dive Mechanic

- Software tool that predicts aerial dynamics of elite divers and provides analytics for diving selectors and biomechanists
- Allows coaches to visually communicate concepts to divers for technique and synchronisation refinement
- Collaboration between Diving Australia, the Australian Institute of Sport and Data61



FOR FURTHER INFORMATION

CSIRO Data61  
e [workspace@csiro.au](mailto:workspace@csiro.au)  
e [paul.cleary@data61.csiro.au](mailto:paul.cleary@data61.csiro.au)  
e [damien.watkins@data61.csiro.au](mailto:damien.watkins@data61.csiro.au)  
[research.csiro.au/workspace/](http://research.csiro.au/workspace/)



Analyse

Collaborate

Commercialise

Everywhere