



UltraFine+ Next Gen Analytics Workflow

**Sign up to UltraFine+™
Next Gen Analytics for
Discovery**



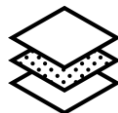
**Submit your
soil sample to
Labwest***



**Send sample details
submission
form**



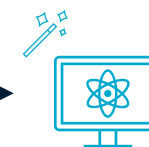
**Receive raw data
from Labwest**



**Confirm
completion of
analysis**



**UltraFine+ Next Gen
Analytics Workflow**



**Receive Data
Package**



Email ultrafine@csiro.au
OR
Ryan.Noble@csiro.au for
more information

Decide on your project
area and approximate
number of samples

Contact [Labwest](#)

Read the UltraFine+ soil
sampling guide

Consider quarantine
restrictions if sending
samples from overseas

*Complete the Labwest
Sample Submission Form
<https://www.labwest.net/wp-content/uploads/2022/05/f-g-02-sample-submission-advice-labwest.pdf>

Ask for the UltraFine+
standard

Ensure standards and
duplicates are incorporated
into the process

Email ultrafine@csiro.au to
give CSIRO permission to
extract your project data
from Labwest

Email complete
CSIRO UFF sample
details submission
form to
ultrafine@csiro.au

Labwest will send your
raw data analyses on a
job by job basis

Email complete list of all
laboratory analyses (Lab Job
IDs) to ultrafine@csiro.au

This will trigger data
extraction from Labwest

Once we receive the sample
submission form and your
confirmation, your project
will enter the UltraFine+™
Next Gen Analytics workflow

The UltraFine+ Team
will contact you as
soon as your data
package is ready

LABWEST

&

