



# Department of Parks and Wildlife

## Marine Monitoring Program

---

**Tom Holmes**

Acting Monitoring Coordinator  
Marine Science Program  
Department of Parks and Wildlife  
Western Australia

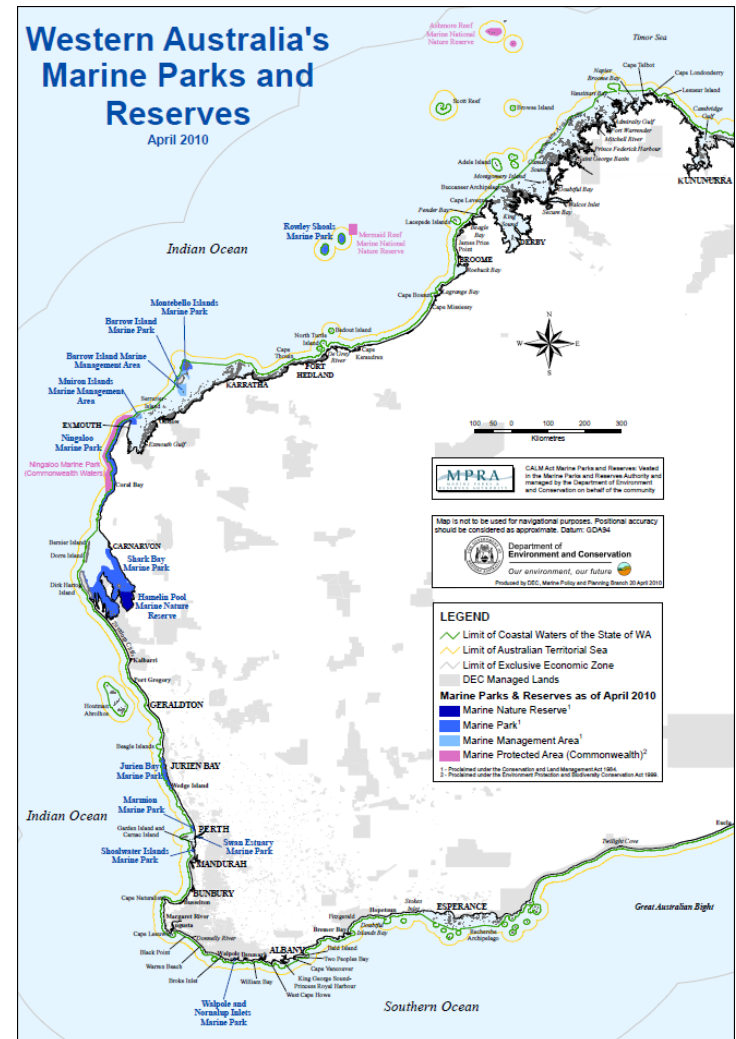


Department of  
**Parks and Wildlife**

# Who we are

## Department of Parks and Wildlife

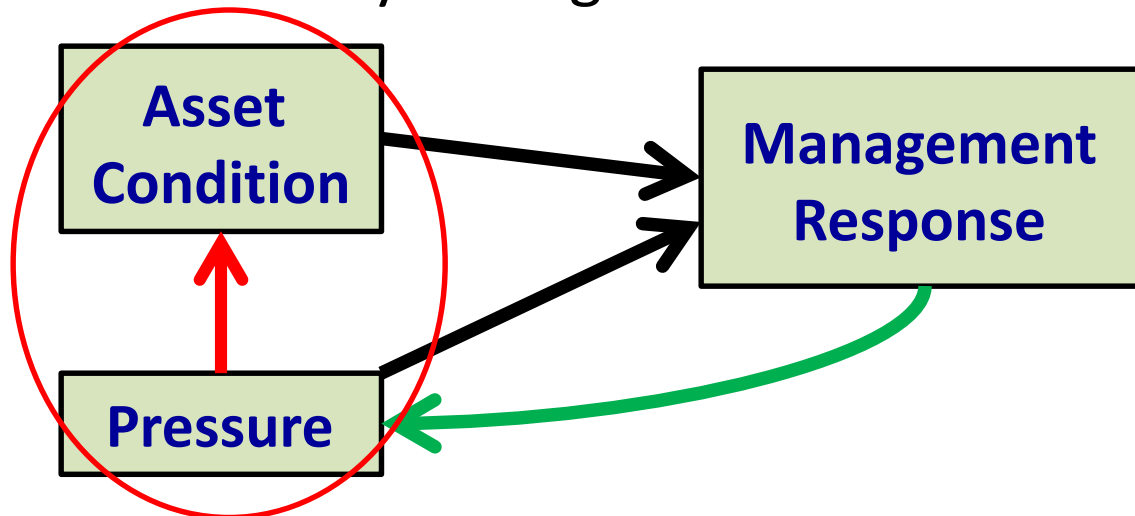
- Legislatively responsible for the management of conservation estate (including marine reserves) and key flora/fauna
- Focal goal of biodiversity conservation
- Responsibilities
  - > visitor services
  - > forest management
  - > fire
  - > science and conservation
- 100 terrestrial and 14 marine parks



# What we do

## Marine Monitoring Program

- Marine parks and key marine fauna
- Conduct and coordinate monitoring to support management strategies and objectives
- Partnership between Marine Science and Regional staff
- Directed at key ecological 'assets'



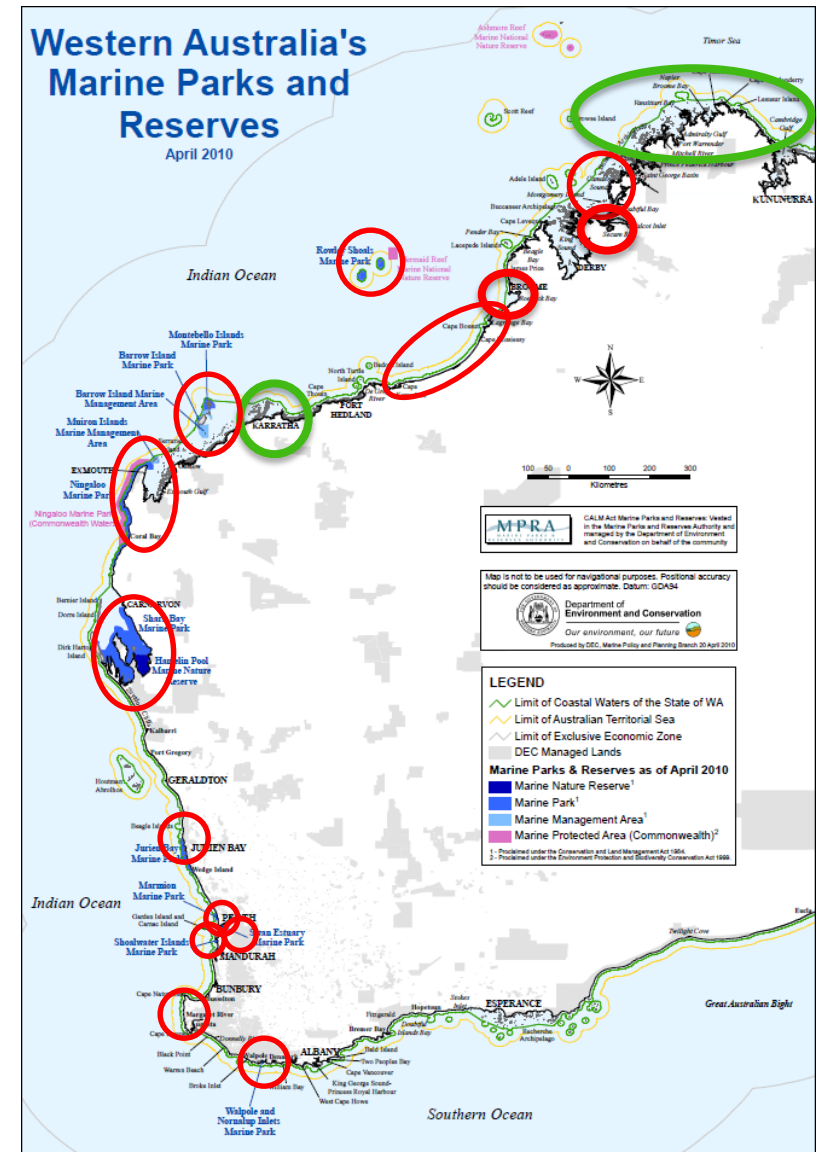
# Strengths and Challenges

## Strengths

- Long-term strategic focus
- Regional staff and infrastructure
- Strong collaborations

## Challenges

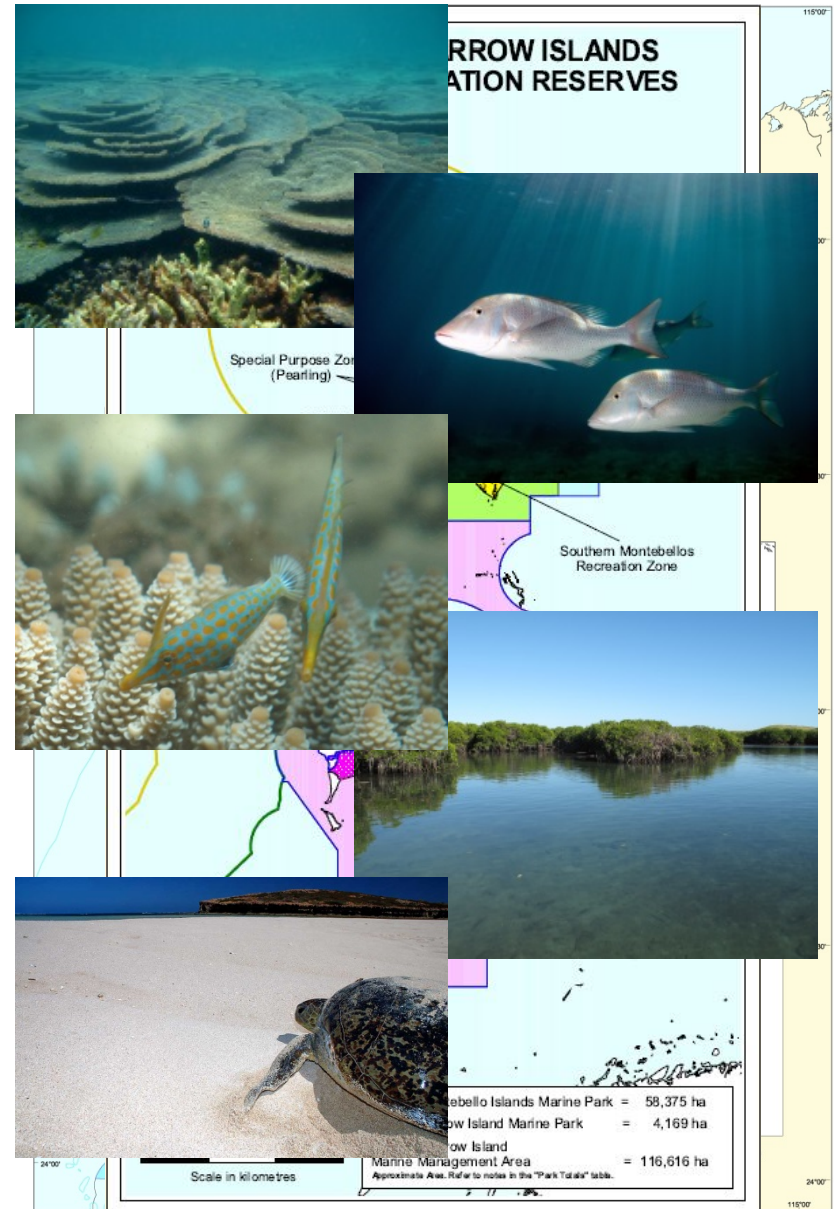
- Large geographical scale
- Ecosystem diversity
- Expanding marine park network
- Relatively small team





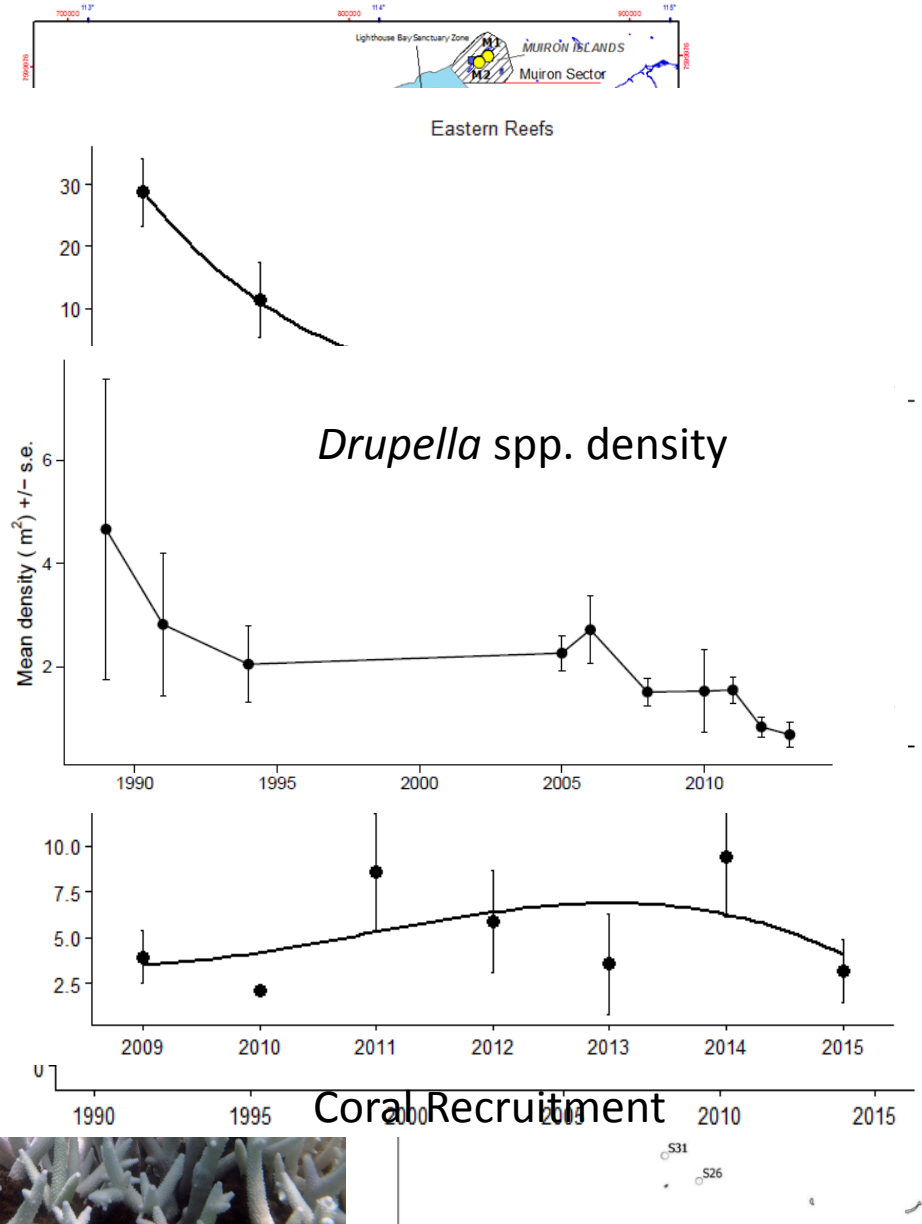
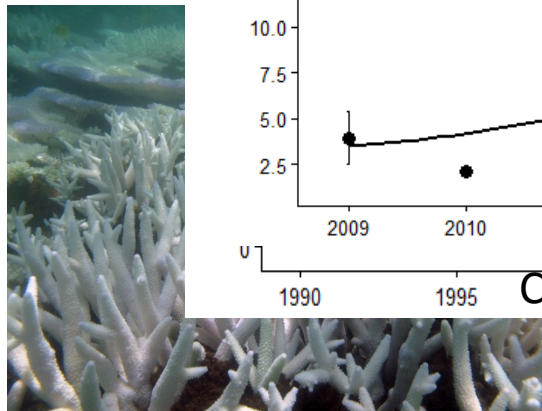
# Pilbara Marine Parks

- Ningaloo marine reserves
- Montebello/Barrow Islands marine reserves
- Active Programs
  - > Coral
  - > Fish
  - > Mangroves
  - > Turtles
  - > Water Temperature



# Corals

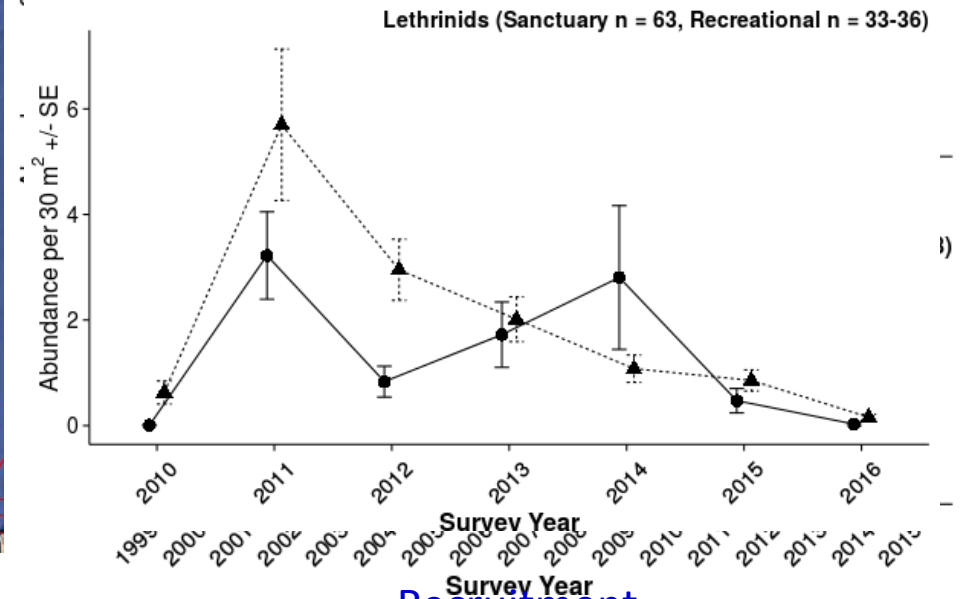
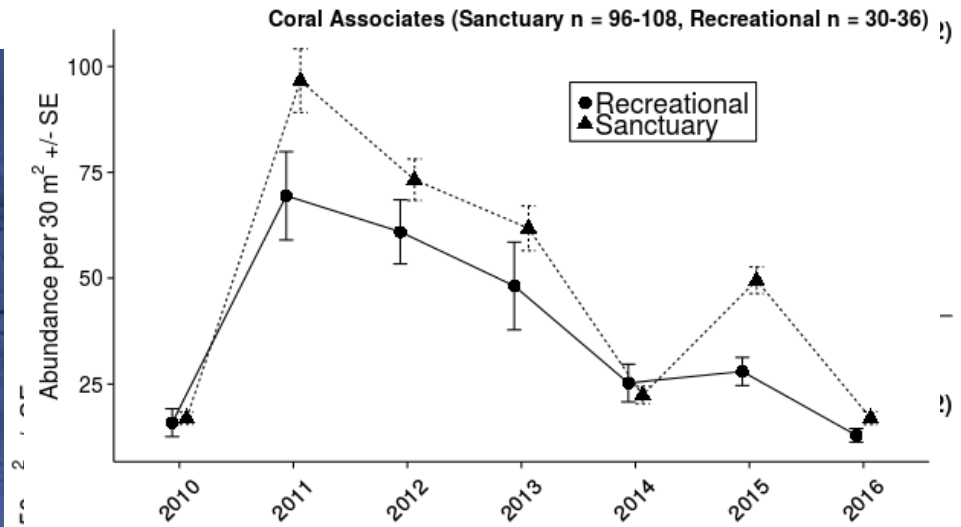
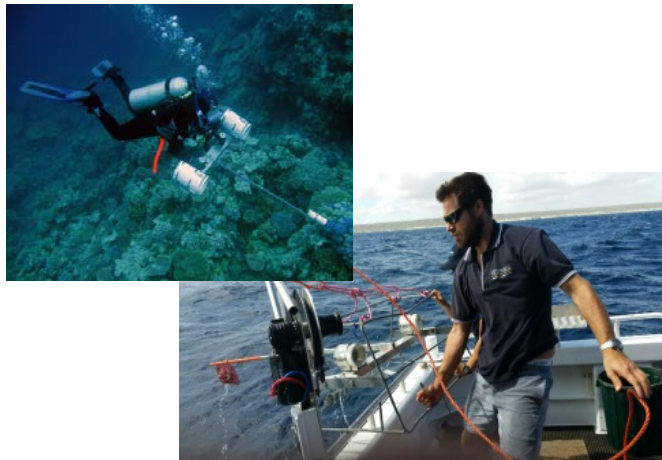
- Coral Cover
- Community Composition
- Recruitment
- *Drupella* predators
- Active collaboration with CSIRO for recruitment tiles in Montebellos



S31  
S26

# Fish

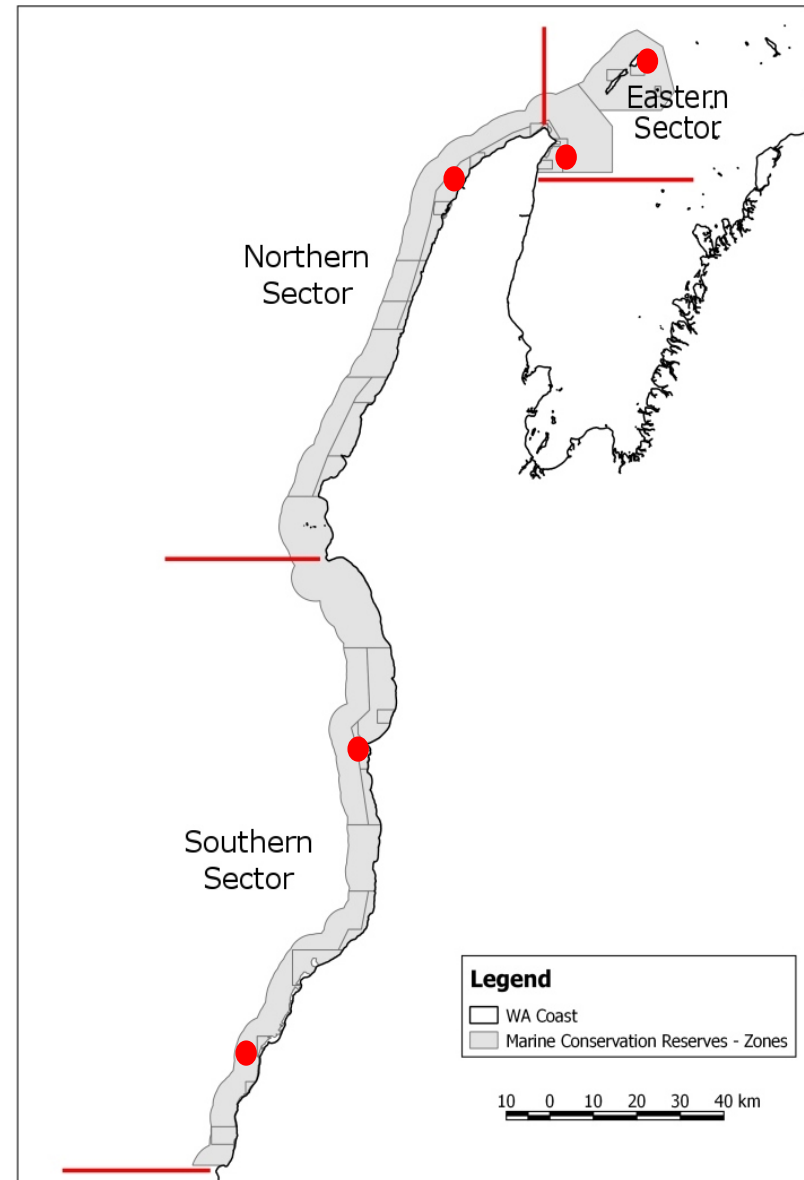
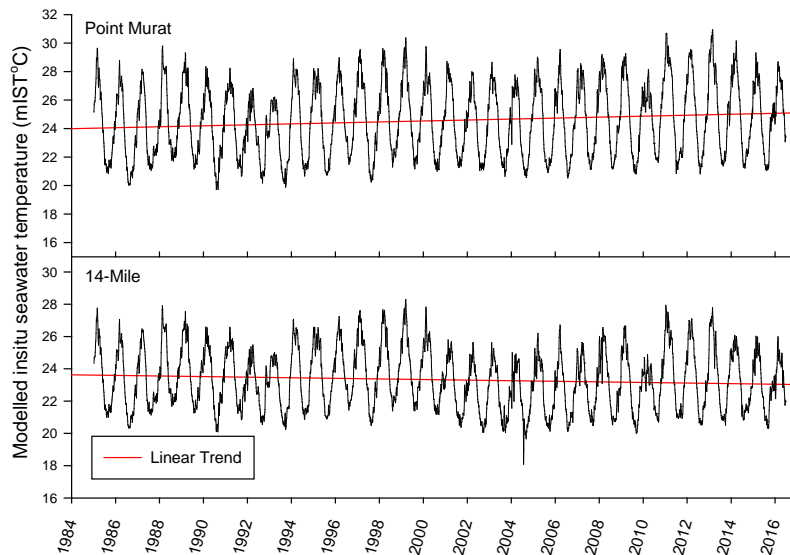
- Shallow water: stereo-DOV
- Deeper water: stereo-BRUV
- Recruitment
- Active collaboration with UWA, AIMS, ANU and CSIRO



Recruitment  
Community Composition

# Water Temperature

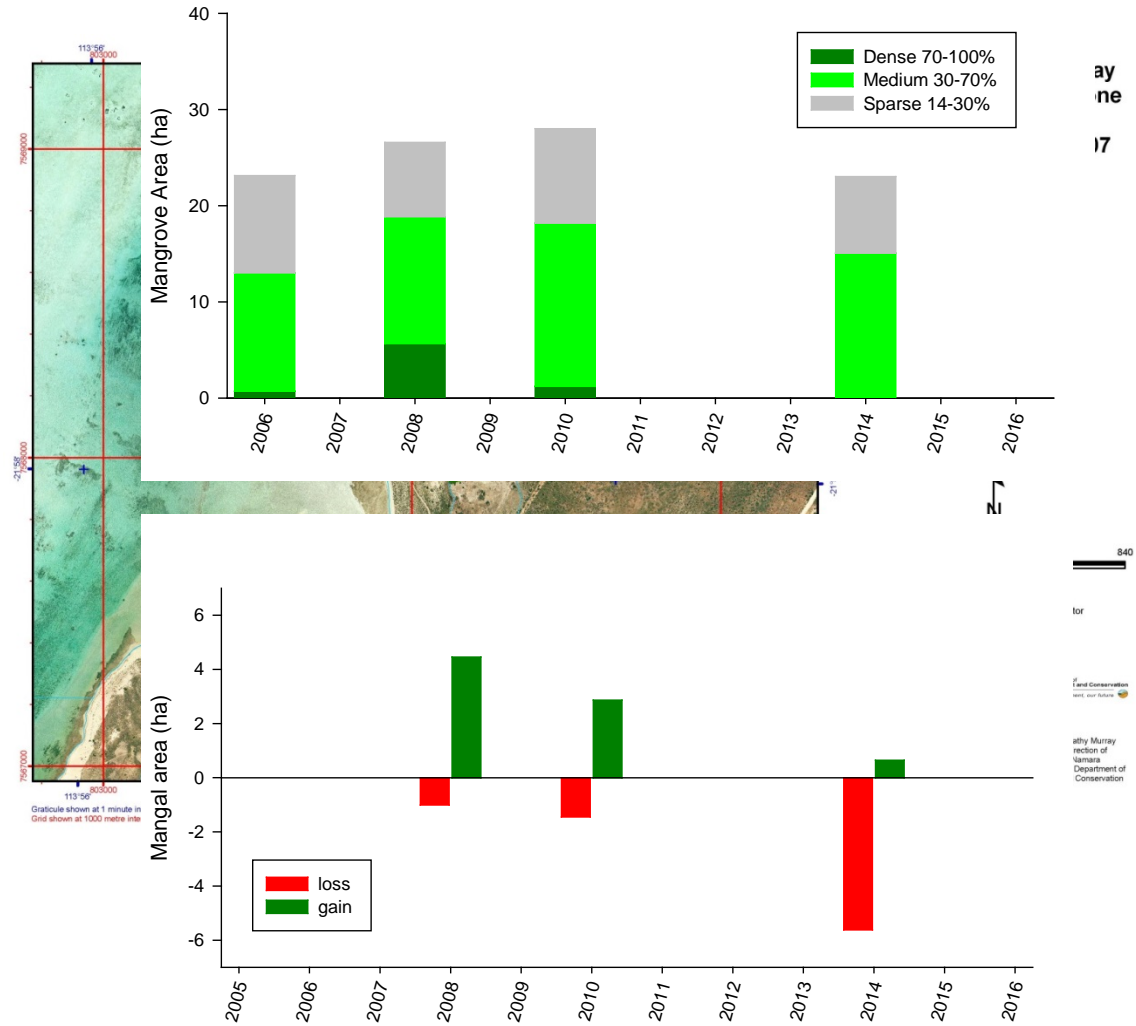
- Incorporates NOAA satellite derived data and in-situ temperature loggers
- Currently being refined use 5km pixels





# Mangroves

- Remote Sensing
- Mangrove Extent
- Foliage Condition



ay  
ne  
17

840  
lor  
Land Conservation  
Murray region of  
Victoria  
Department of  
Conservation

# Where to from here...

- Refine fish, coral, mangrove and turtle pro
- Dev
- Dev
- ass
- Stil

- 
- 
- 
- 





# With thanks

- Marine Science staff
- Regional staff
- Collaborators

