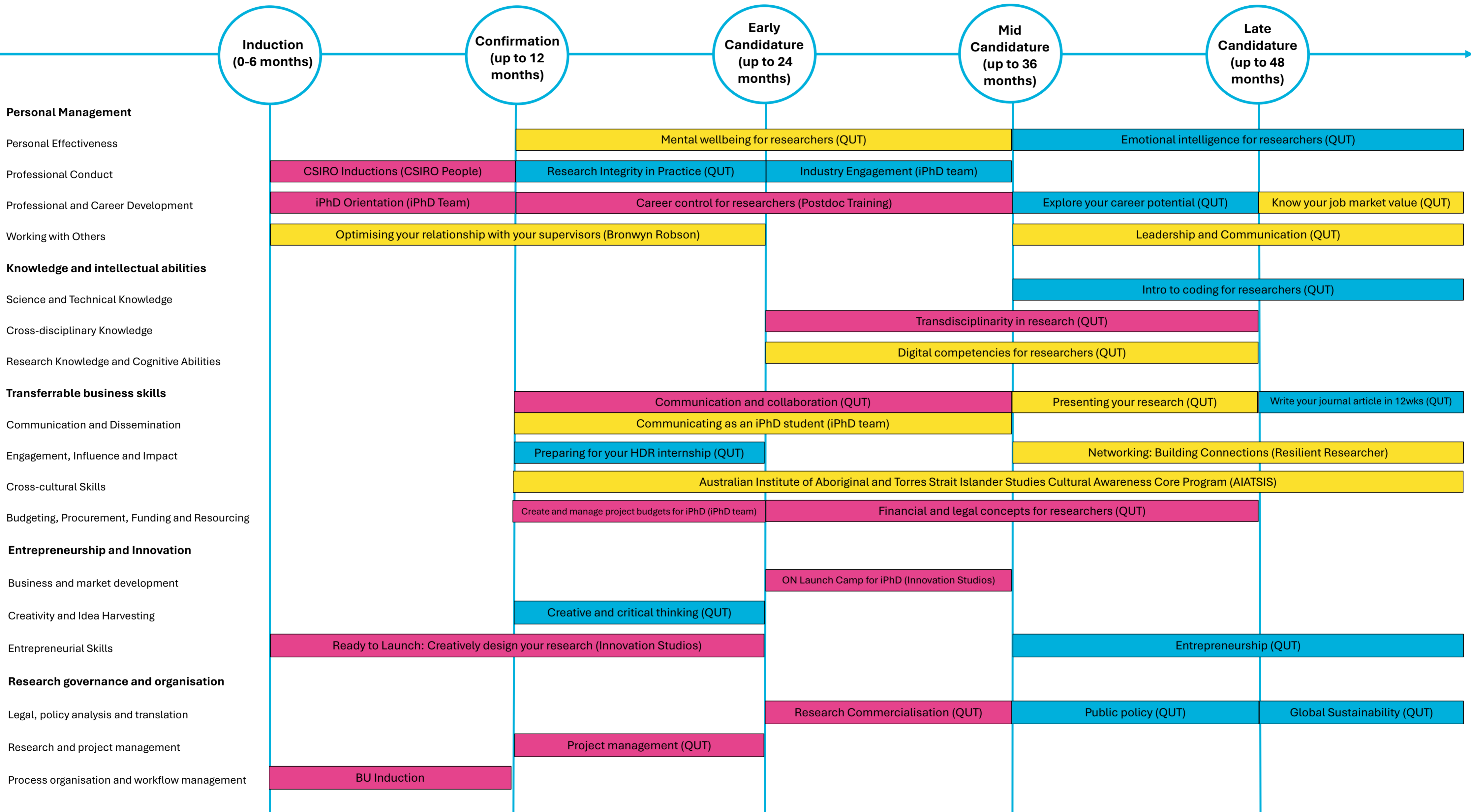




Industry PhD Training Journey Map



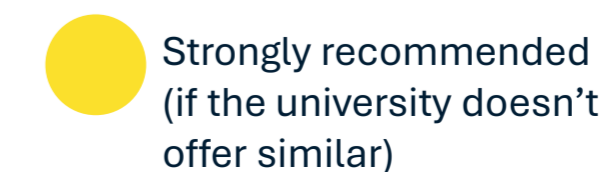
Commitment

- All QUT courses are online, instructor-led and self-paced, spanning 5 weeks with an estimated 3-5 hours per week commitment
- Career control is an 8-week online, instructor-led, self-paced course with an estimated 6-8 hour total commitment
- Ready to Launch – online, instructor-led, 0.5 day commitment
- ON Launch Camp for iPhD – 1 day (online, instructor-led) + 1 day (in-person).

Key



Mandatory



Strongly recommended (if the university doesn't offer similar)



Optional

Instructions: How to use the iPhD Training Journey Map

The iPhD Training Journey Map represents the most efficient and best path of knowledge acquisition over the four-year PhD journey.

☑ DO's

- Follow the Mandatory path of courses where possible (e.g., subject to course availability). Some courses have pre-requisite courses/knowledge that need to be completed before moving on to more advanced courses.
- Feel free to take Optional courses at any time over the four years. If you feel they are directly related to your area of study or project, take them earlier rather than later.
- Provide feedback on courses attended. You will be helping a future student! The LMS sends out course evaluations after your attendance has been marked. Feedback you provide will help us to plan and determine whether a course should be offered again, or how to improve.

☒ DON'Ts

- Feel pressured to complete all the Mandatory courses in your first year! Spread them out. Most Mandatory courses allow up to two years to complete (except courses where such info would be moot in later years).
- Undertake Strongly Recommended courses if your university offers something similar. You're more than welcome to attend anyway as different facilitators and courses usually provide different perspectives even on the same topic.
- Be afraid to check with the iPhD team regarding Recognition of Prior Learning (RPL). If you have previously completed formal (e.g. university or TAFE qualifications) or informal (e.g., company-based courses or on-the-job), or are required to take them by your university, you could knock off some Mandatory courses if you can provide evidence of attainment.