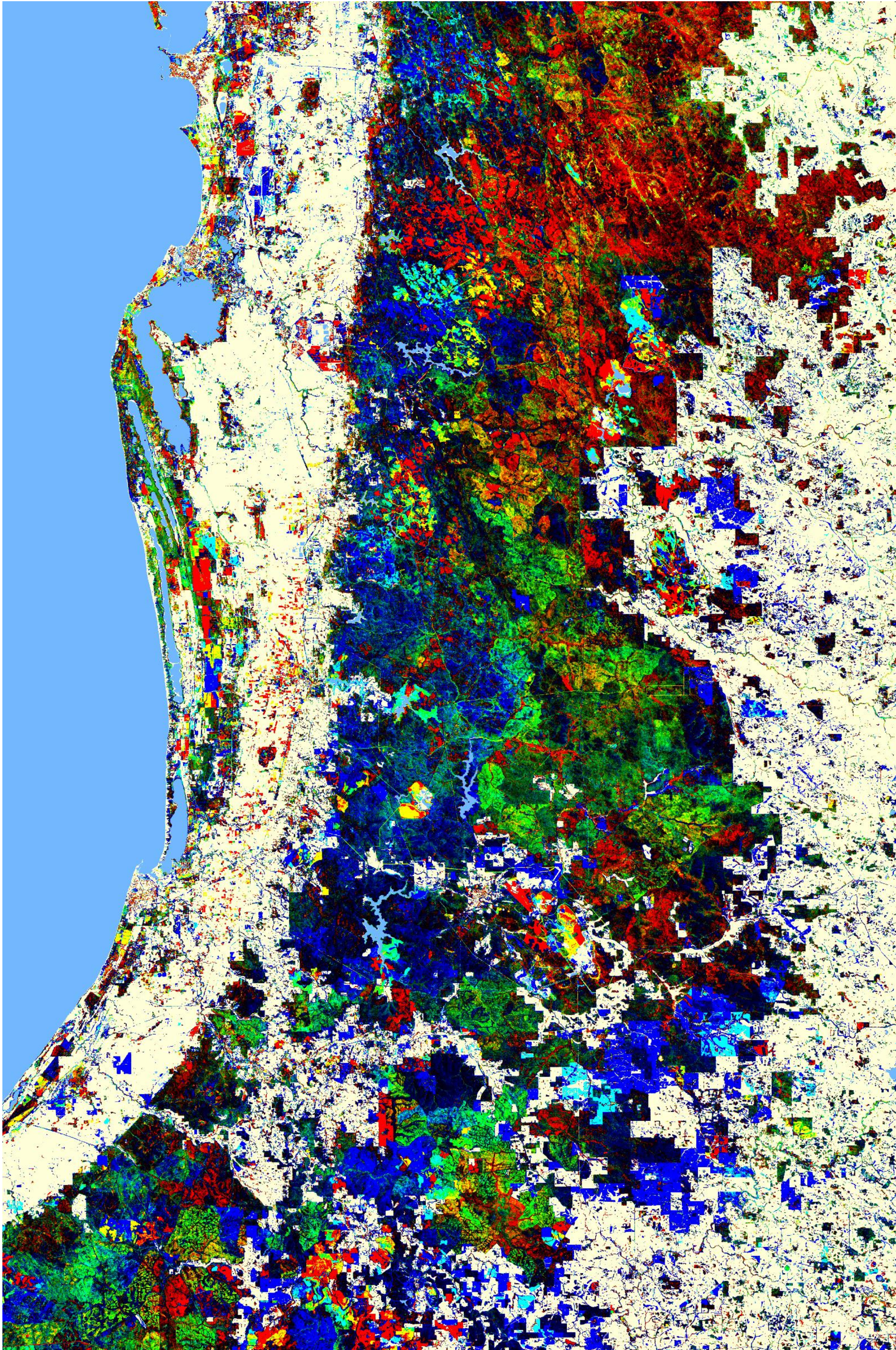
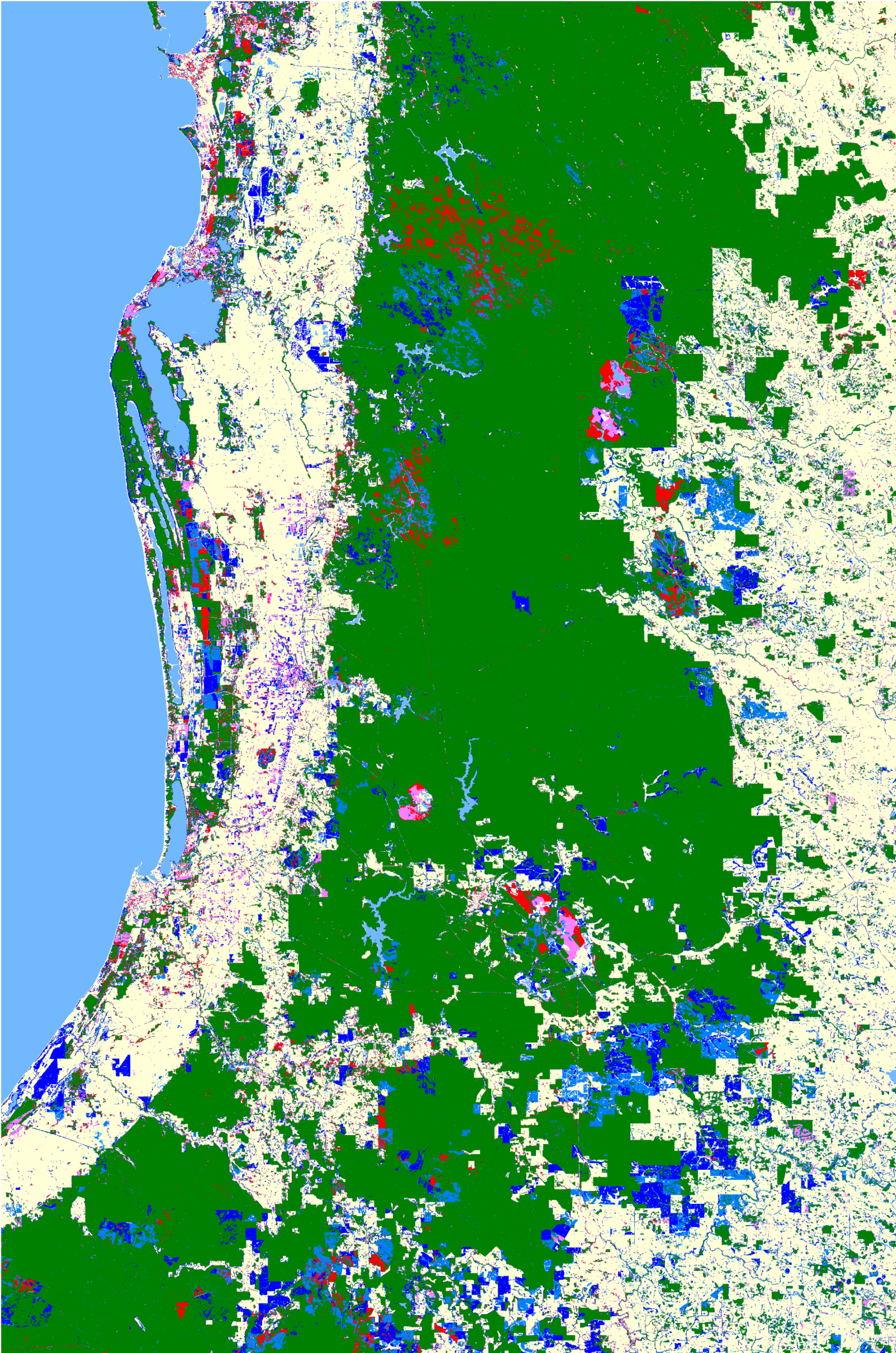


# Perennial Vegetation Change Images 1988 to 2015



[www.data61.csiro.au](http://www.data61.csiro.au)



## Change in Area of Bush / Perennial Vegetation 1988 to 2015 from Summer Landsat TM Image Sequence

- Pink: Vegetation loss 1988 to 2002 (and still cleared)
- Red: Vegetation loss 2003 to 2015
- Dark blue: Revegetation 1988 to 2002
- Mid blue: Revegetation 2003 – 2015
- Light blue: Water

## Trends and Changes 1988 to 2015 within Perennial Vegetation from Summer Landsat TM Image Sequence

- Colour Interpretation Guide – applicable to perennial vegetation only.
- Black areas have been relatively stable over the 27 year period.
- Red: linear trend of increasing brightness (“decline”)
- Blue: linear trend of decreasing brightness (“recovery”)
- Green: negative quadratic trend (“disturbance followed by some recovery”)
- Note: These interpretations are a guide only and the present thresholds for colour display have been set by image interpretation only.

### FOR FURTHER INFORMATION

Dan Sandison  
e [dan.sandison@landgate.wa.gov.au](mailto:dan.sandison@landgate.wa.gov.au)

### LIMITATIONS AND LIABILITIES

The information contained in these vegetation maps is necessarily based in part upon various assumptions and predictions. The Land Monitor II Project (comprising the Western Australian State Government agencies, Department of Land Administration, Department of Environment, Water and Catchment Protection, Department of Agriculture, Department of Conservation and Land Management, Department of Environmental Protection, Department of Land Administration, and the Ministry of Planning and Infrastructure, the Water Corporation of WA, and the Commonwealth agency CSIRO Mathematical and Information Sciences) accepts no responsibility for any inaccuracies in these vegetation maps, and persons relying on these maps do so at their own risk.

