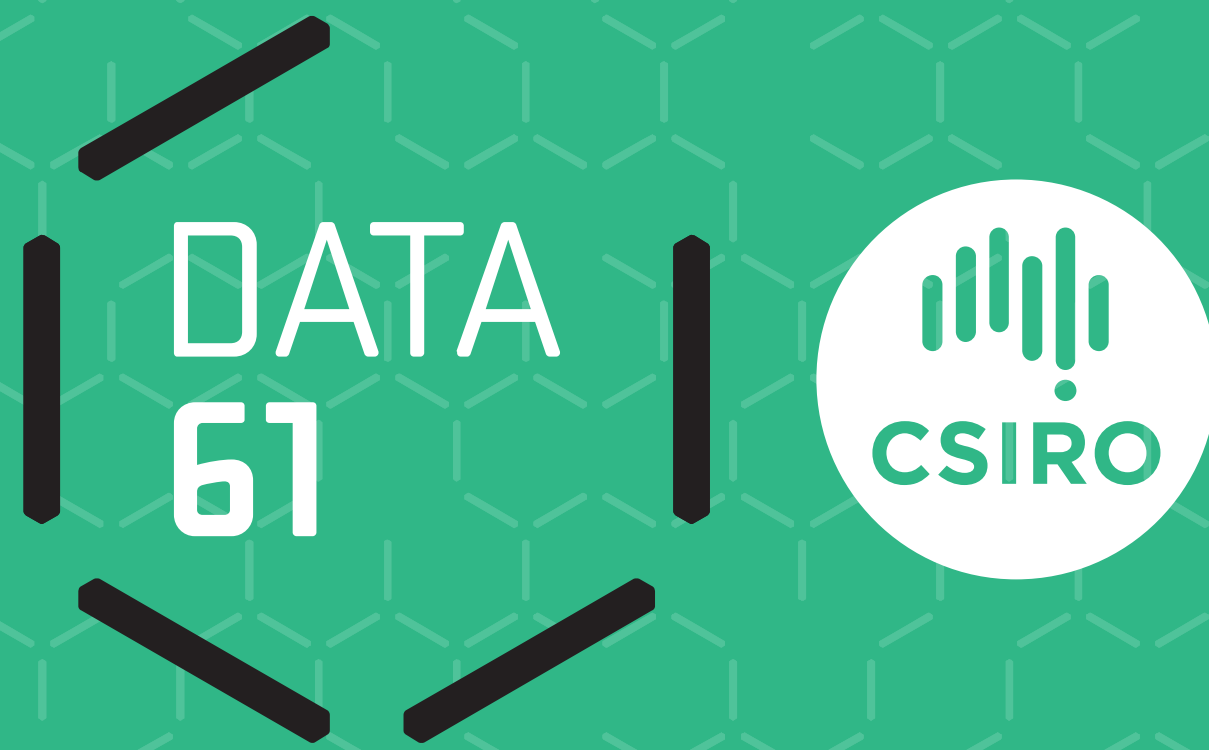


Kenya Land Cover & Change

CSIRO RSII Team and Partners

www.data61.csiro.au



The Australian government together with the Clinton Climate Initiative (CCI) have been working with the governments of the East African community to better report greenhouse emissions from land use and facilitate improved natural resource management. In Kenya, the government has set up the System for Land-based Emissions Estimation (SLEEK) program to address this issue. The collaboration between the Kenyan government and Australia was born from Australia’s leadership in National Carbon Accounting System (NCAS), which sources CSIRO technical expertise in this area, and specific to this project, the national land cover monitoring work developed by the Remote Sensing and Image Integration (RSII) team.



Figure 1: Map of Africa showing location of Kenya in red circle.

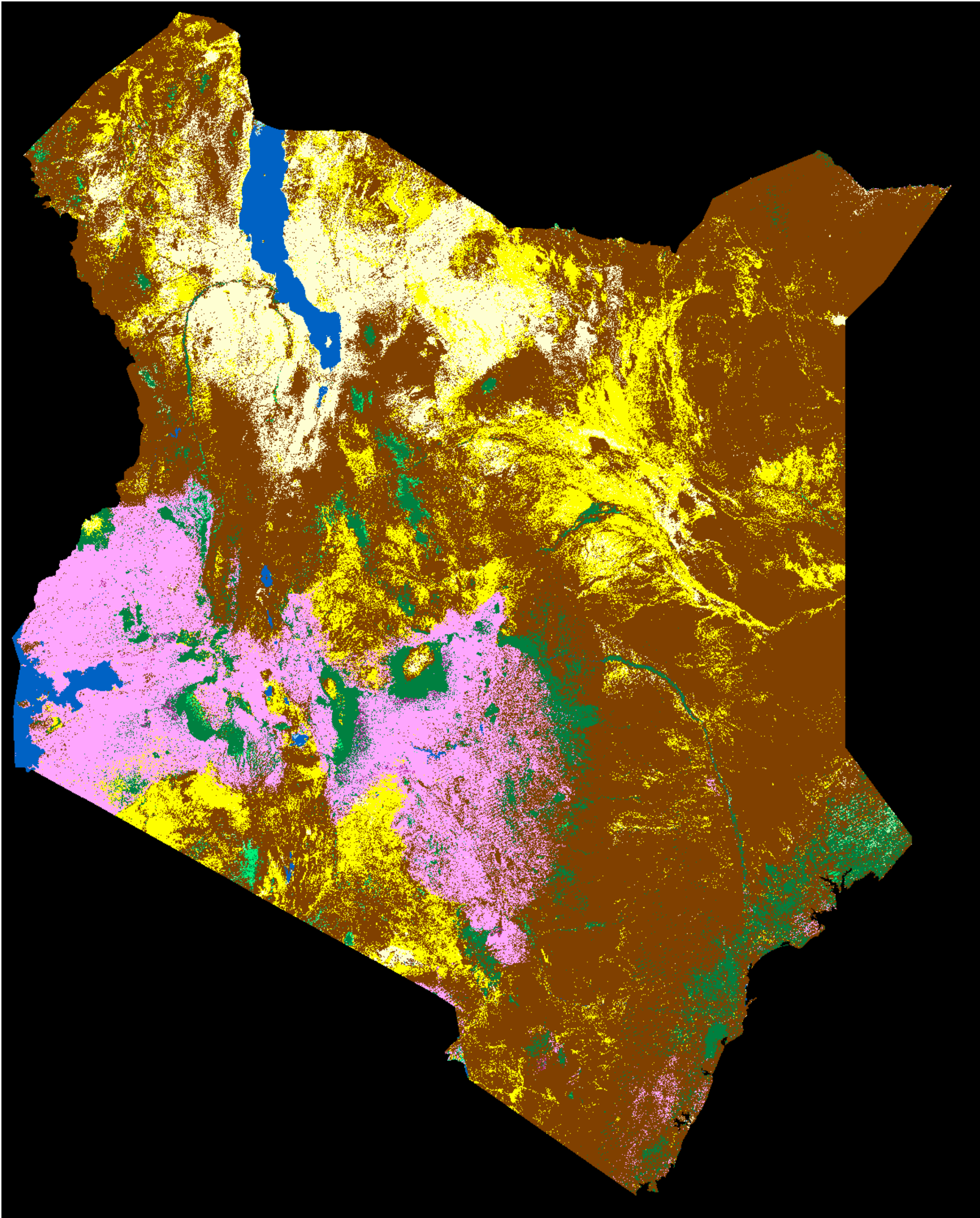


Figure 2: National land cover classified map of Kenya for 2012.

Colour legend	
open grassland	yellow
wooded grassland	orange
other land	light yellow
vegetated wetland	light blue
open water	dark blue
Dense forest	dark green
Moderate forest	medium green
Open forest	light green
Peren. Crop	purple
Annual crop	pink

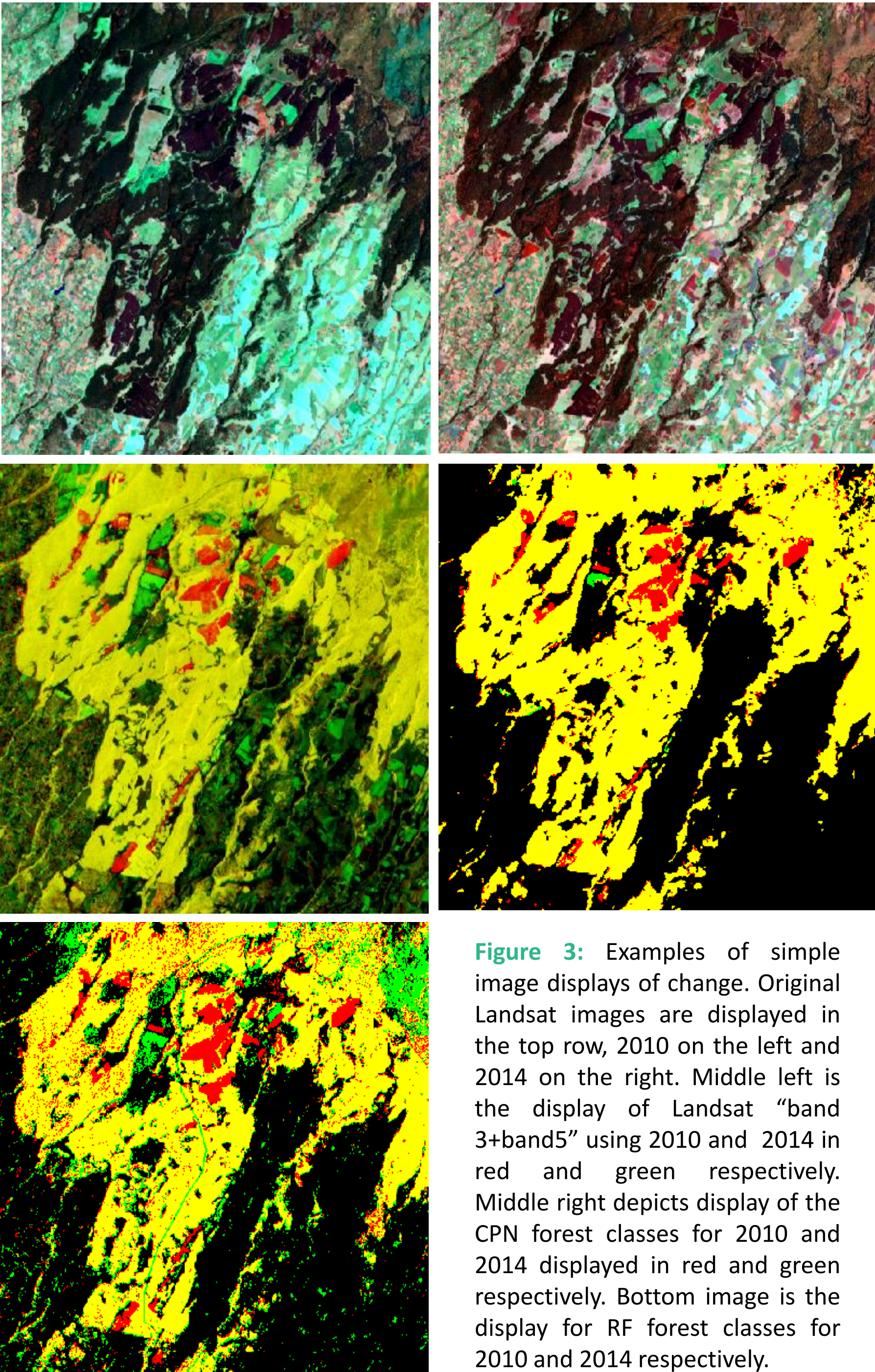


Figure 3: Examples of simple image displays of change. Original Landsat images are displayed in the top row, 2010 on the left and 2014 on the right. Middle left is the display of Landsat “band 3+band5” using 2010 and 2014 in red and green respectively. Middle right depicts display of the CPN forest classes for 2010 and 2014 displayed in red and green respectively. Bottom image is the display for RF forest classes for 2010 and 2014 respectively.

SLEEK Program

The SLEEK program was implemented by the Government of Kenya to achieve a robust system to track land-based emissions. This program has received programmatic support from the Clinton Foundation and financial support from the Government of Australia. SLEEK has been specifically designed to focus on providing nationwide, time series consistent, land cover maps for Kenya. The maps will allow for analysis of land cover and cover change through time. In addition to supporting SLEEK, the maps and statistics produced by the program will serve as official Government documents for informing Government processes across the land sector – such as land use planning, tracking deforestation, and landscape restoration.

CSIRO Role

The CSIRO RSII team was engaged in the SLEEK project due to its internationally recognised work on the National Carbon Accounting Landcover Change Program.

Our main role include provision of:

- Proven CSIRO developed algorithms and methods for time-series monitoring
- In-country training, support and guidance to the technical team in Kenya
- Remote support for QA/QC
- Continuous improvement recommendations for future development



FOR FURTHER INFORMATION

Peter Caccetta
e peter.caccetta@Data61.csiro.au
Joanne Chia
e joanne.chia@Data61.csiro.au

