

Department of Environment, Parks and Water
Security

Strategic Environmental Planning for the Darwin Region

Brydie Hill

Darwin Living Lab Symposium
3 August 2022

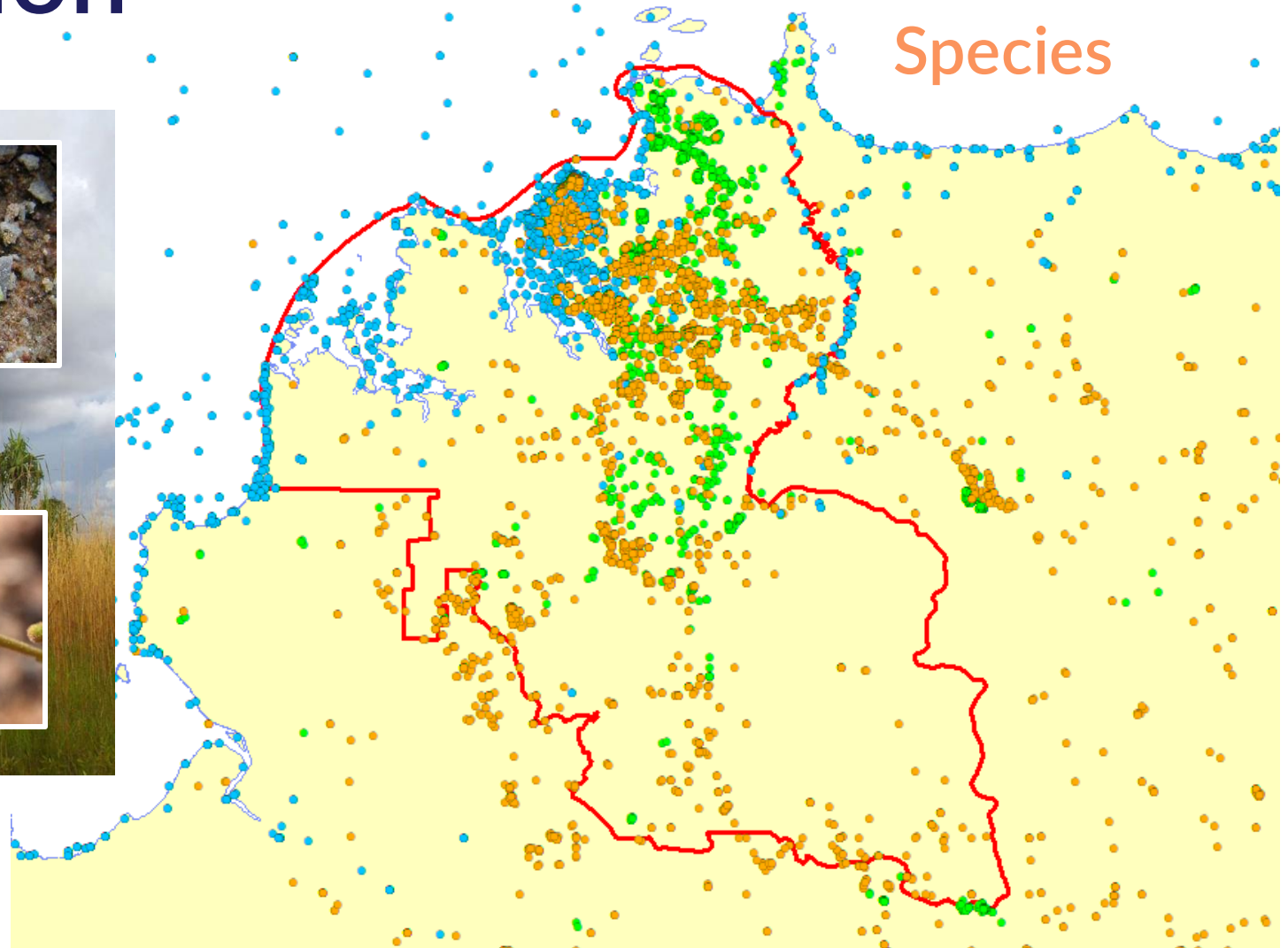


The Darwin Region

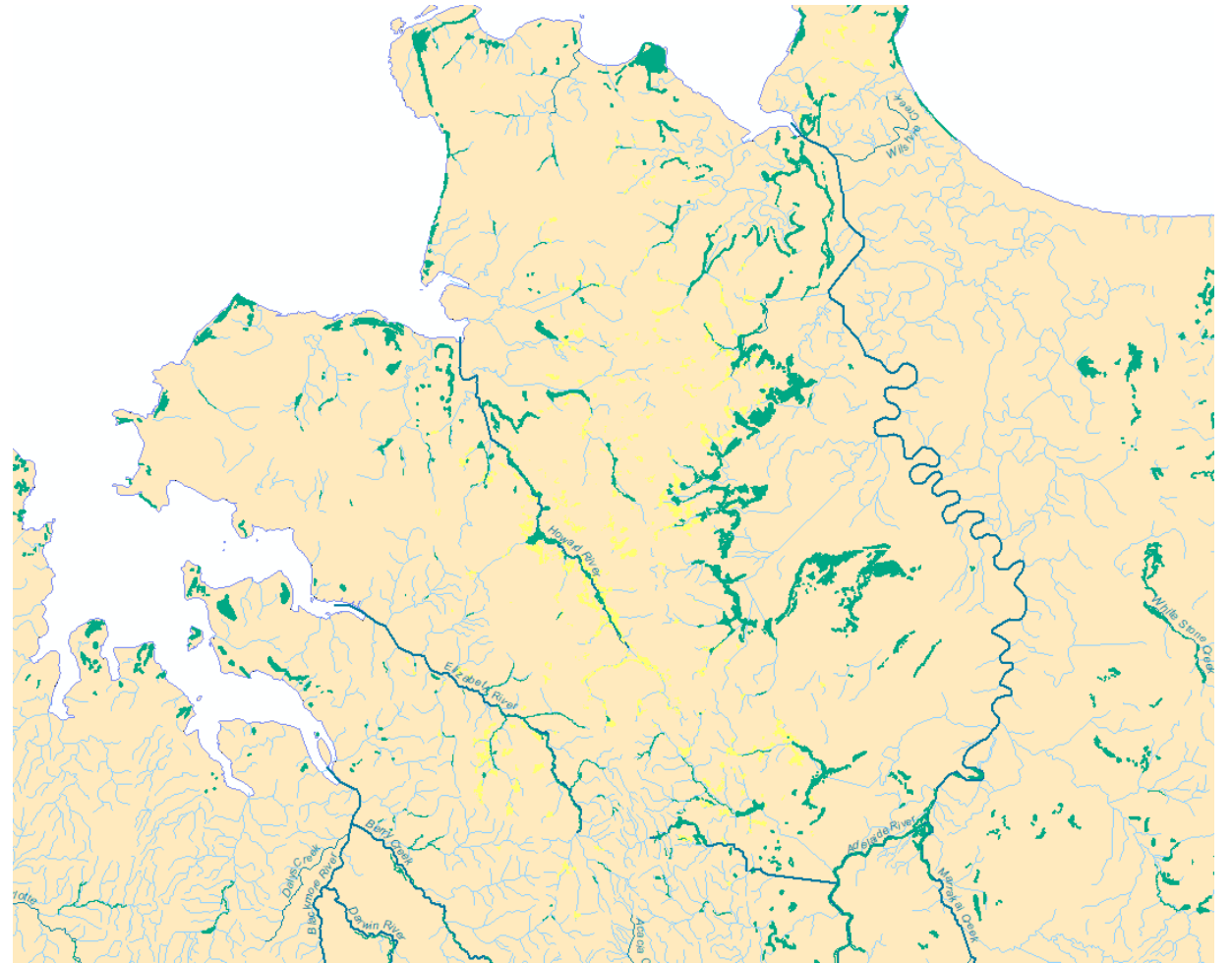
Threatened
Species



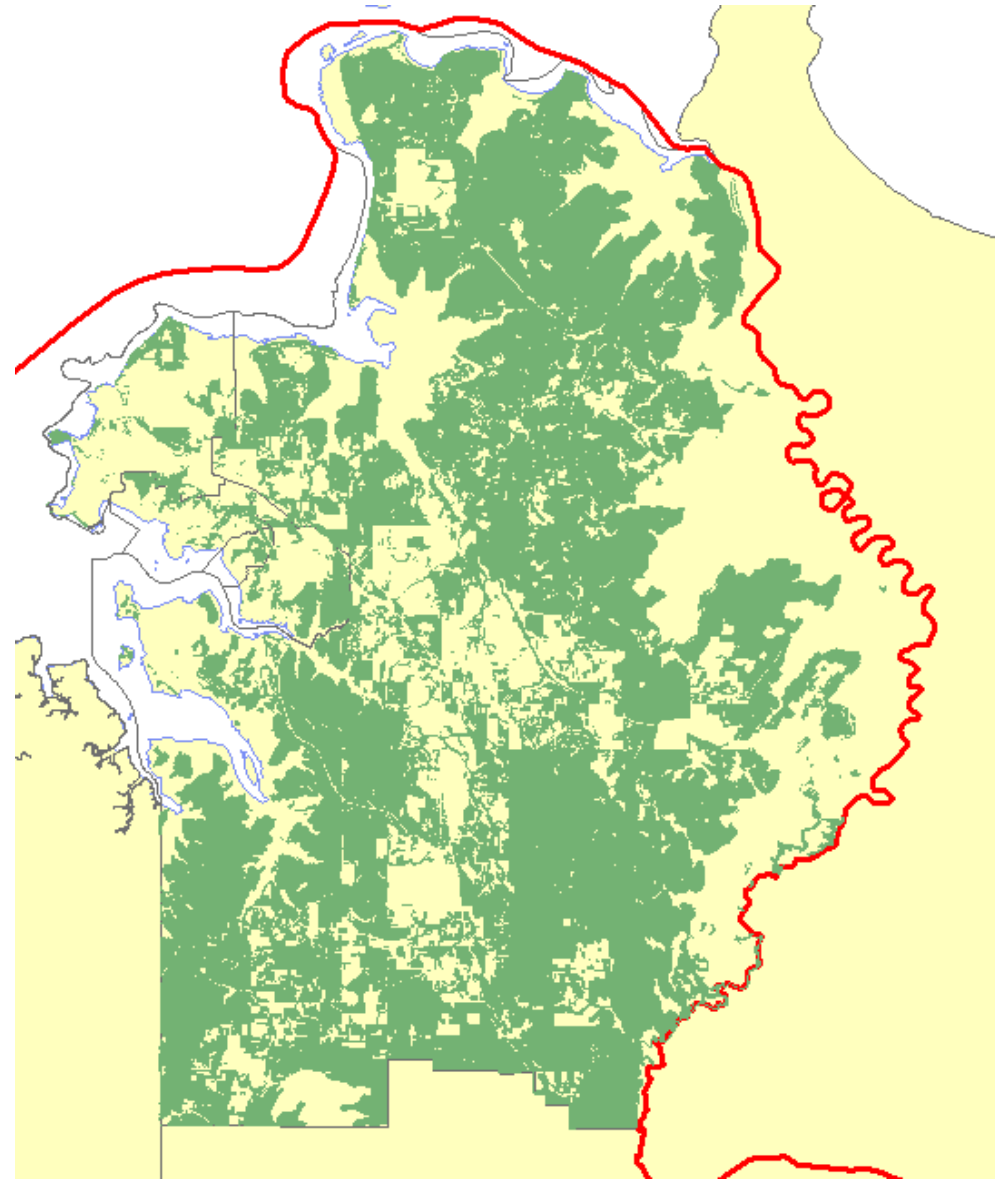
Sandsheet heath



Rainforest



Woodland



Finding the balance



Strategic Environmental Planning

- Identify areas of high biodiversity values
- Identify priority development areas
- Identify areas for conservation
 - maintain viable populations
 - conflict with surrounding land uses?
- Identify mechanisms for protection
- On-going management