

Josh's House Living Laboratory

Monitoring, Evaluating and Communicating the Journey

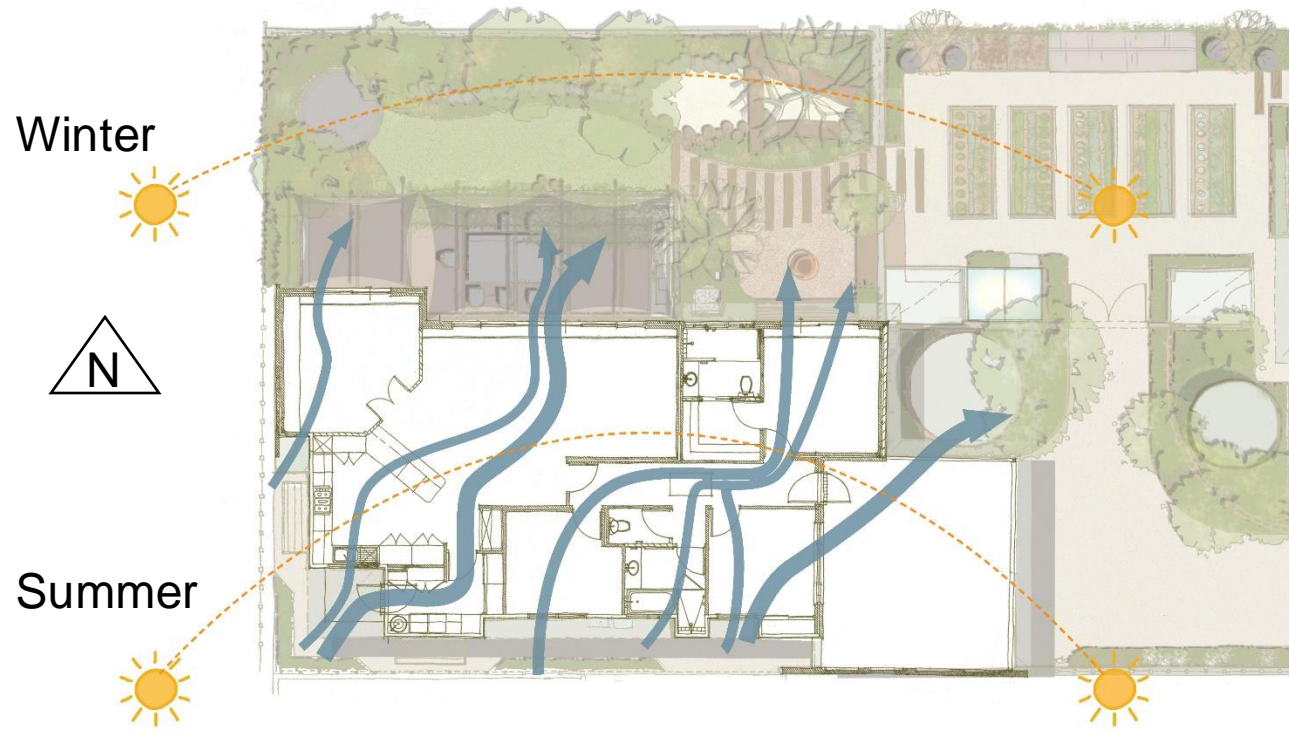
Dr Josh Byrne



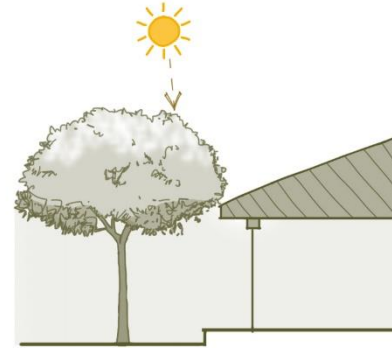


CLIMATE RESPONSIVE DESIGN & CONSTRUCTION

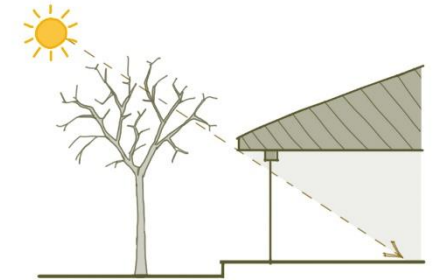
Solar Gain & Cross Ventilation



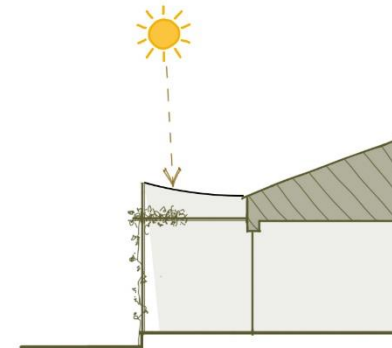
Summer



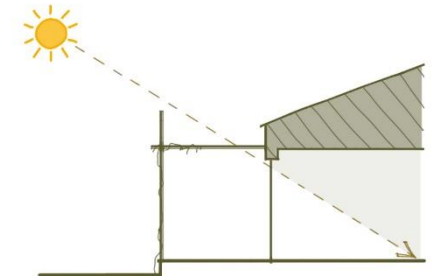
Winter



Summer



Winter



THERMAL SHELL

Internal Thermal Mass & Wall Insulation



Light Coloured Roof + Roof & Ceiling Insulation



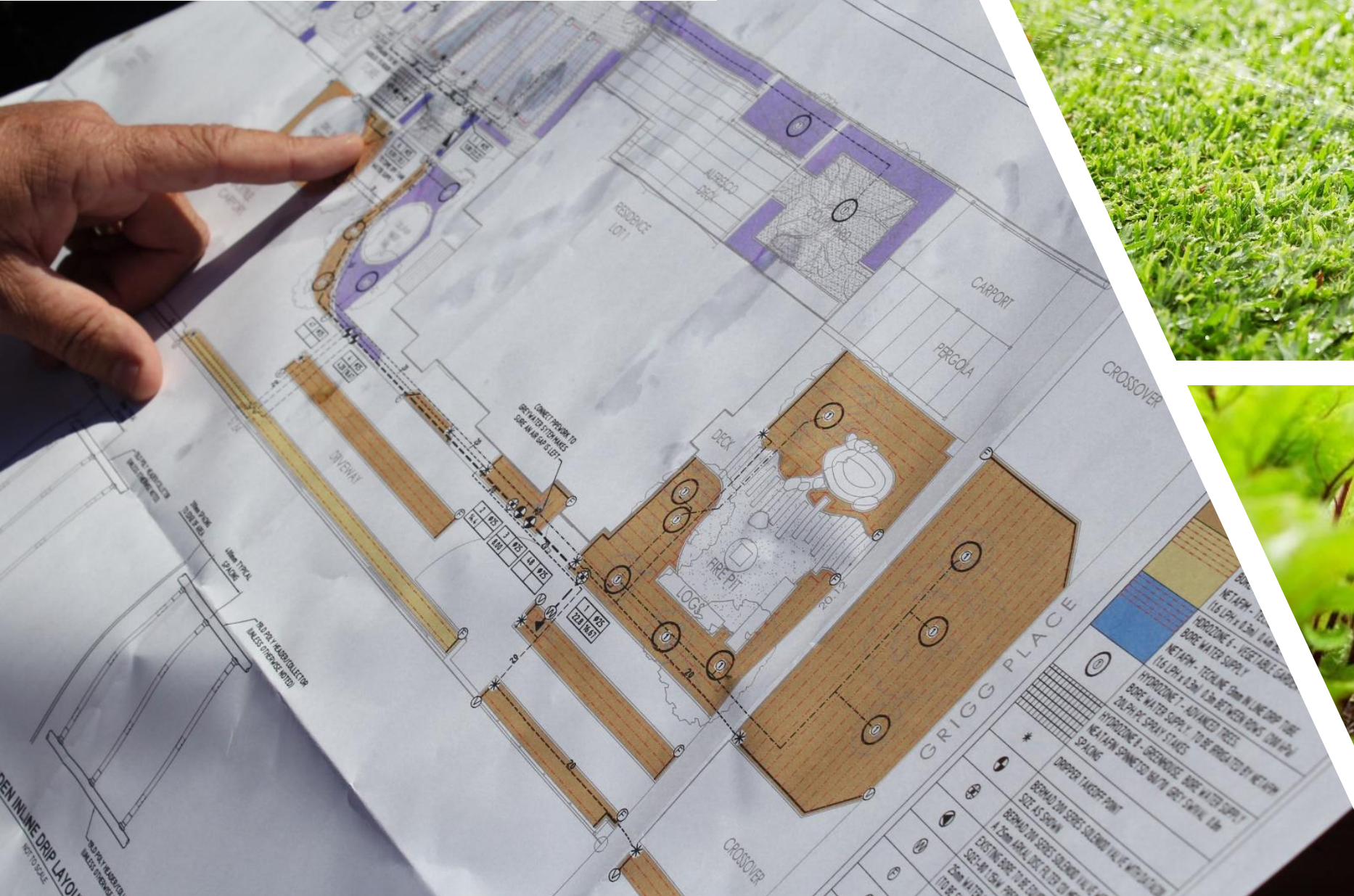
High Performance Glazing & Drapes



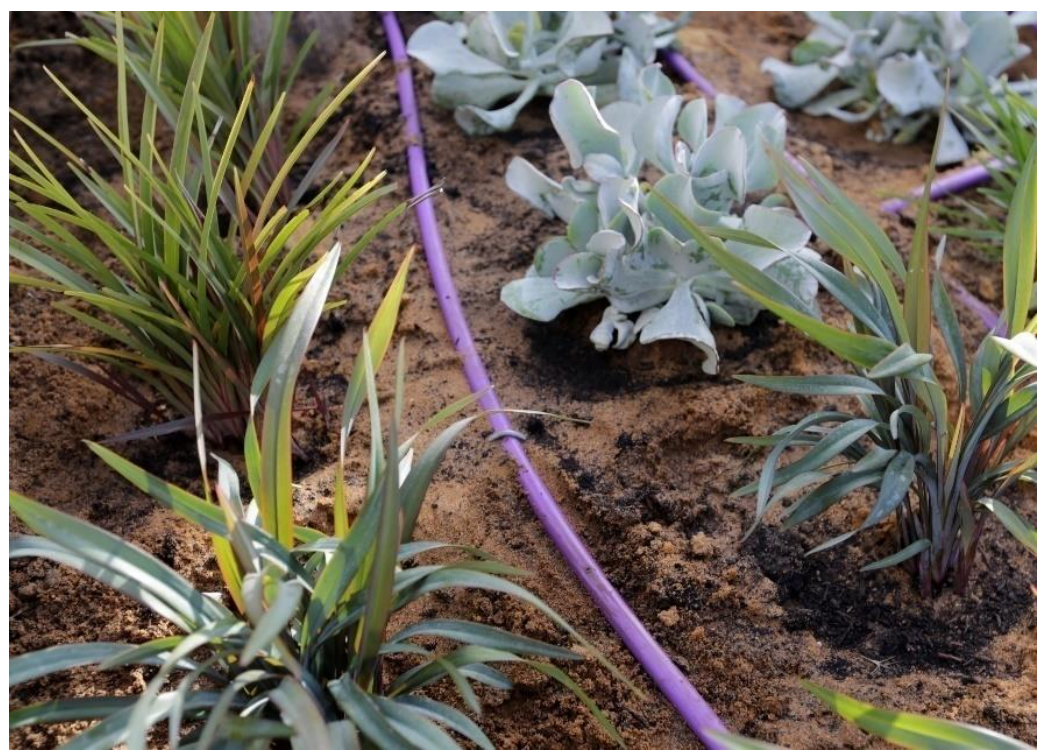
Landscaping for Seasonal Shading & Localised Cooling



Landscape Hydrozoning



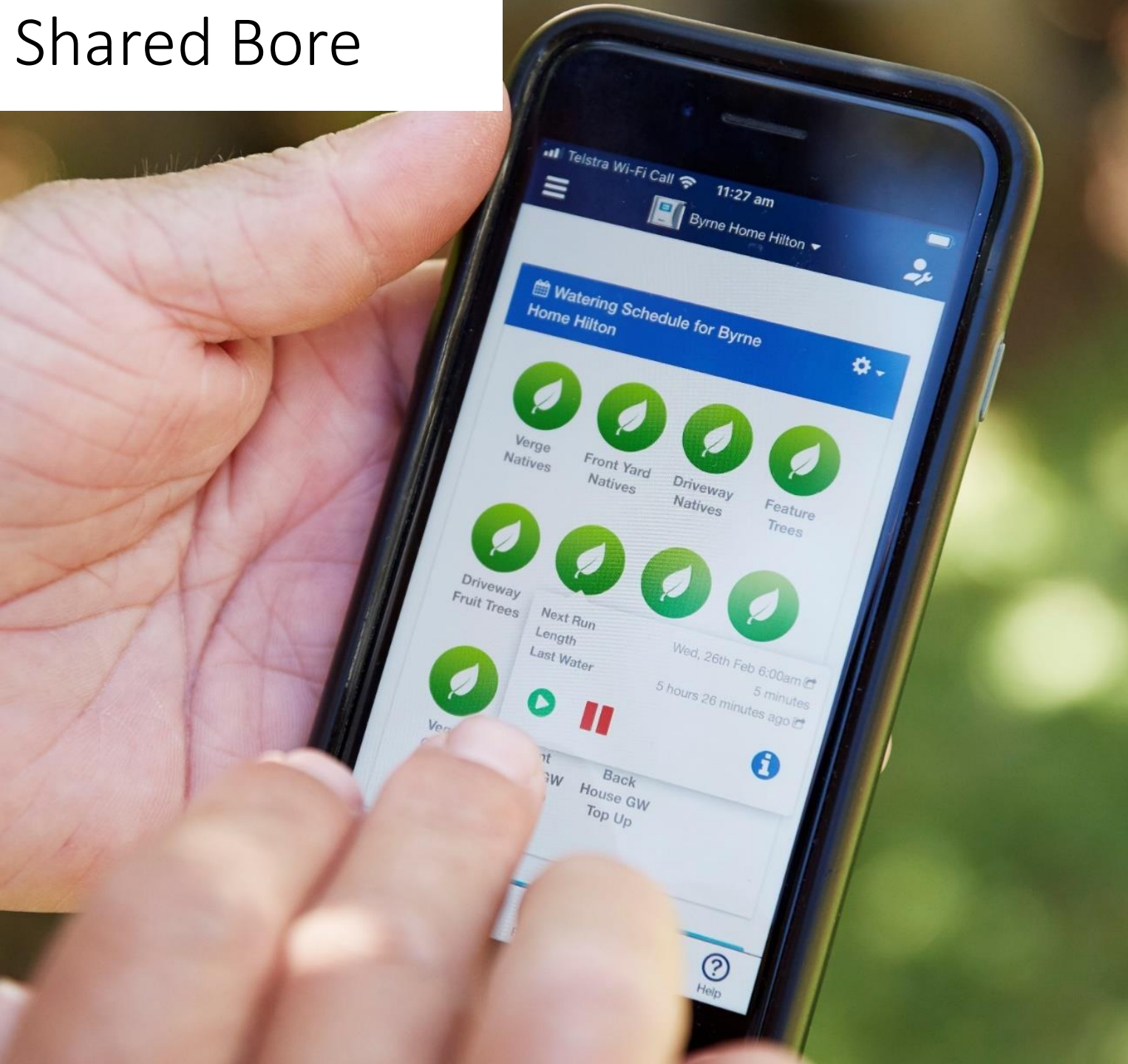
Greywater Reuse



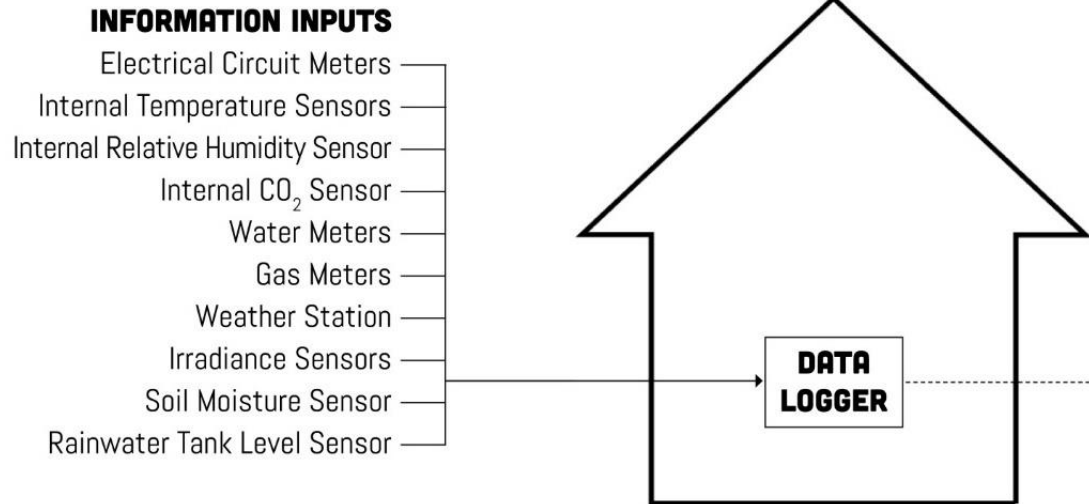
Stormwater Harvesting



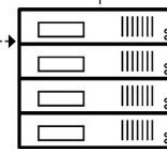
Shared Bore



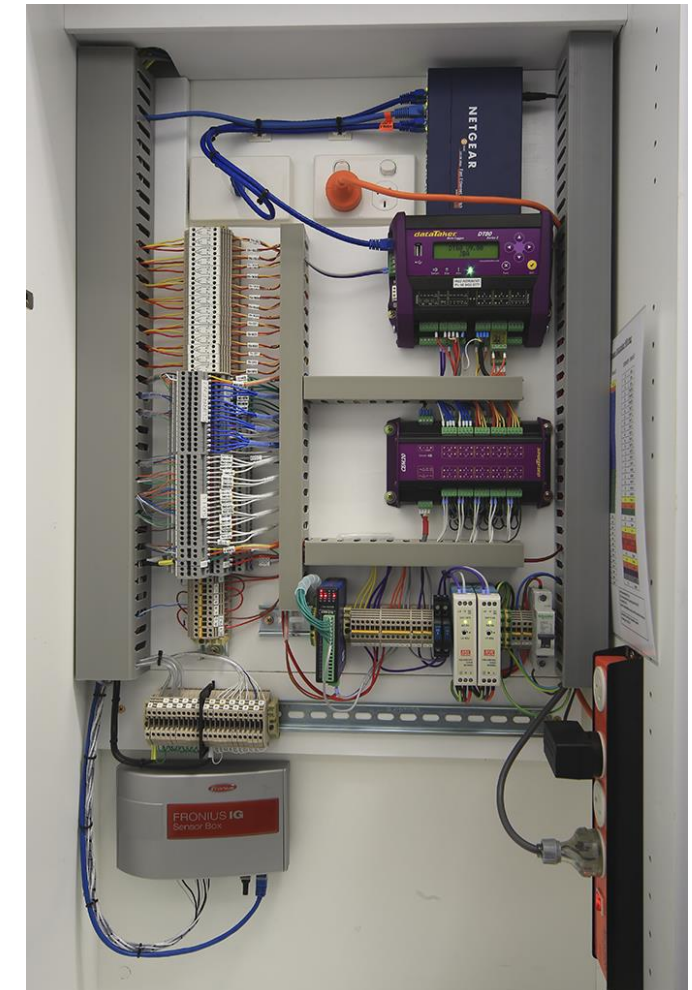
PERFORMANCE MONITORING



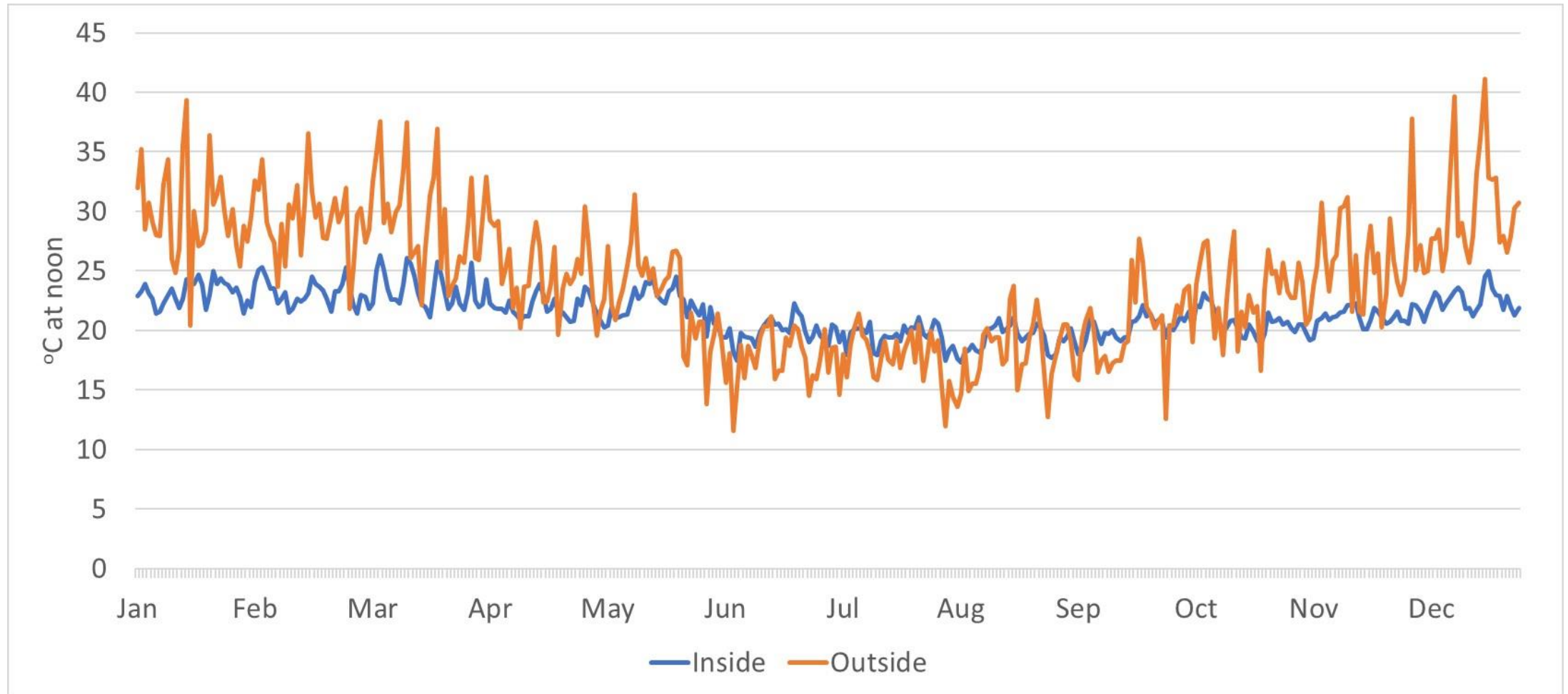
JOSH'S HOUSE WEBSITE



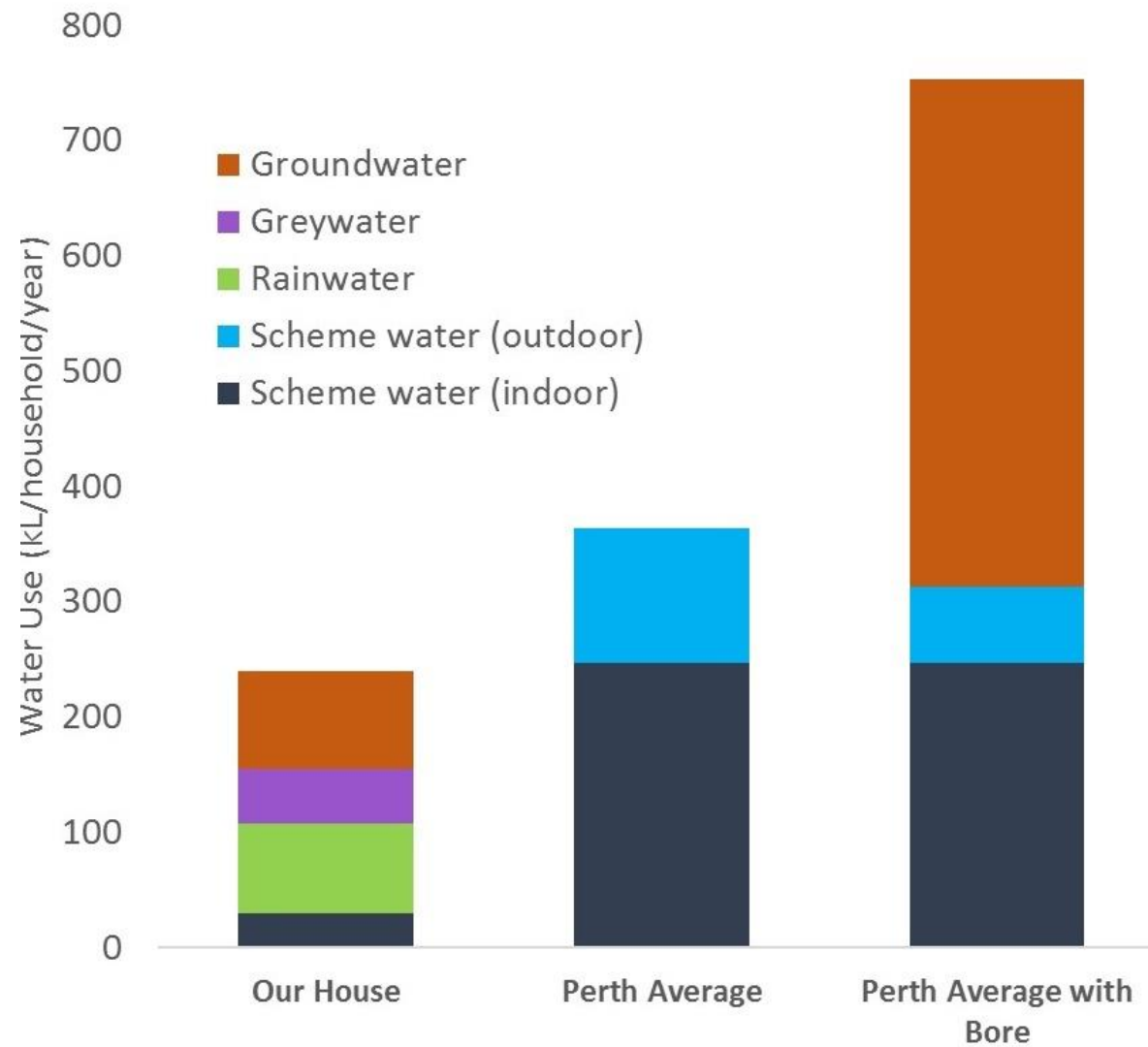
DATA BASE SERVER



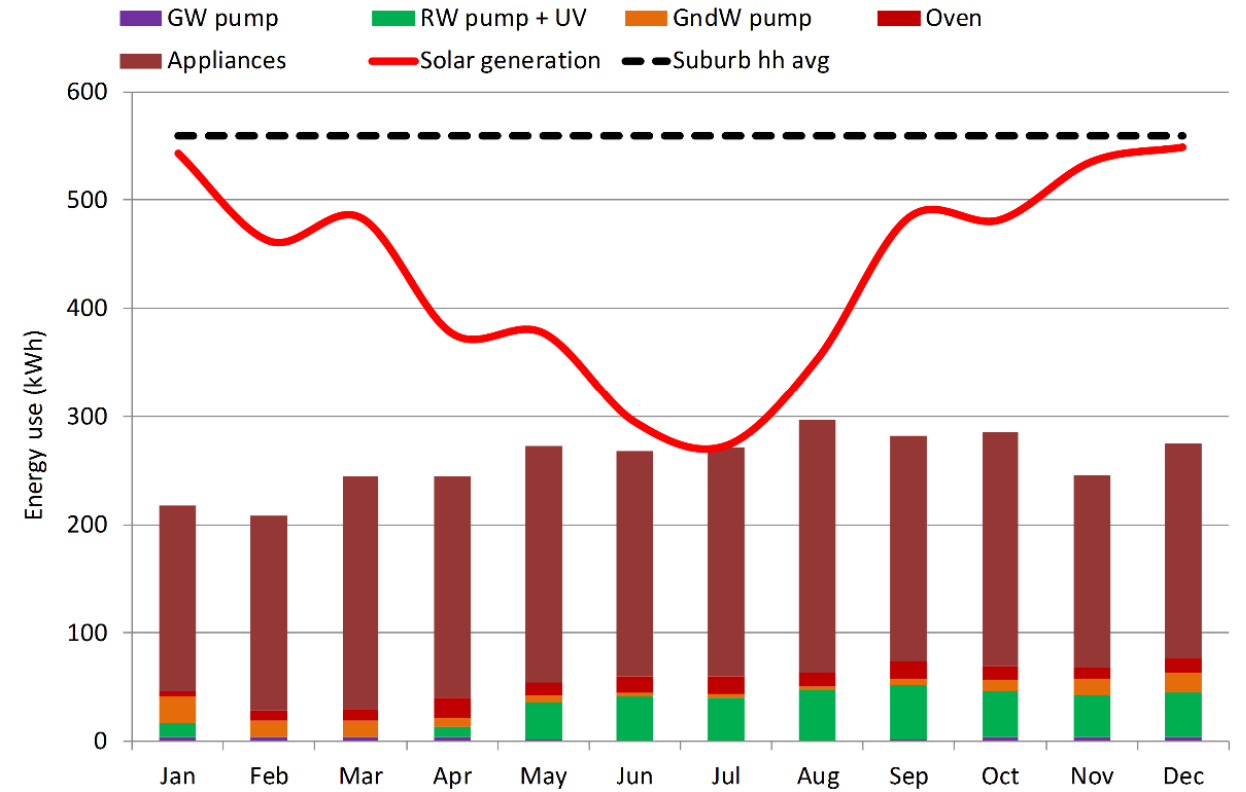
Annual Temperature Profile



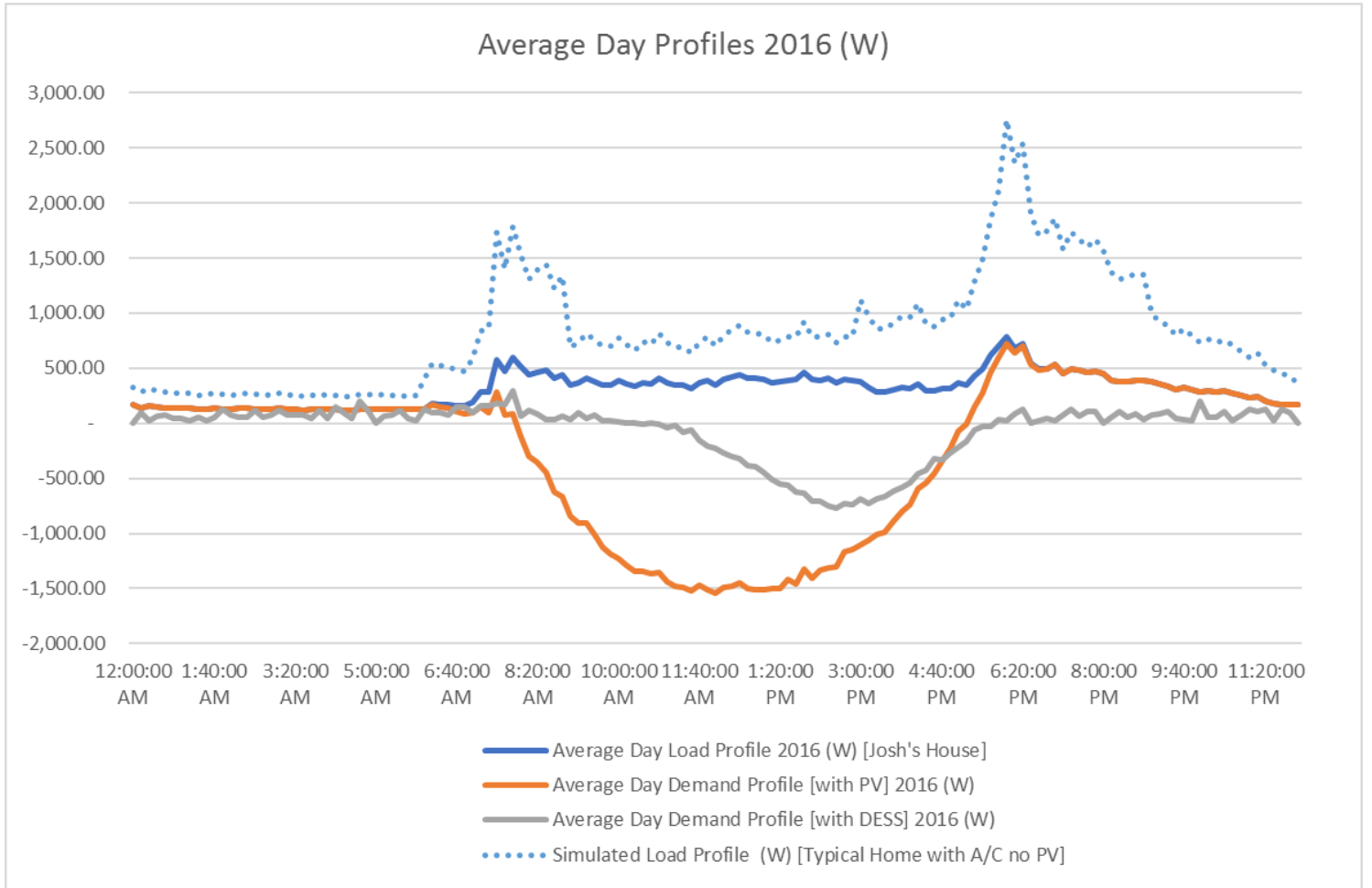
Annual Water Use by Source



SOLAR ENERGY SHWS & PV's



SHWS, PV's & Battery

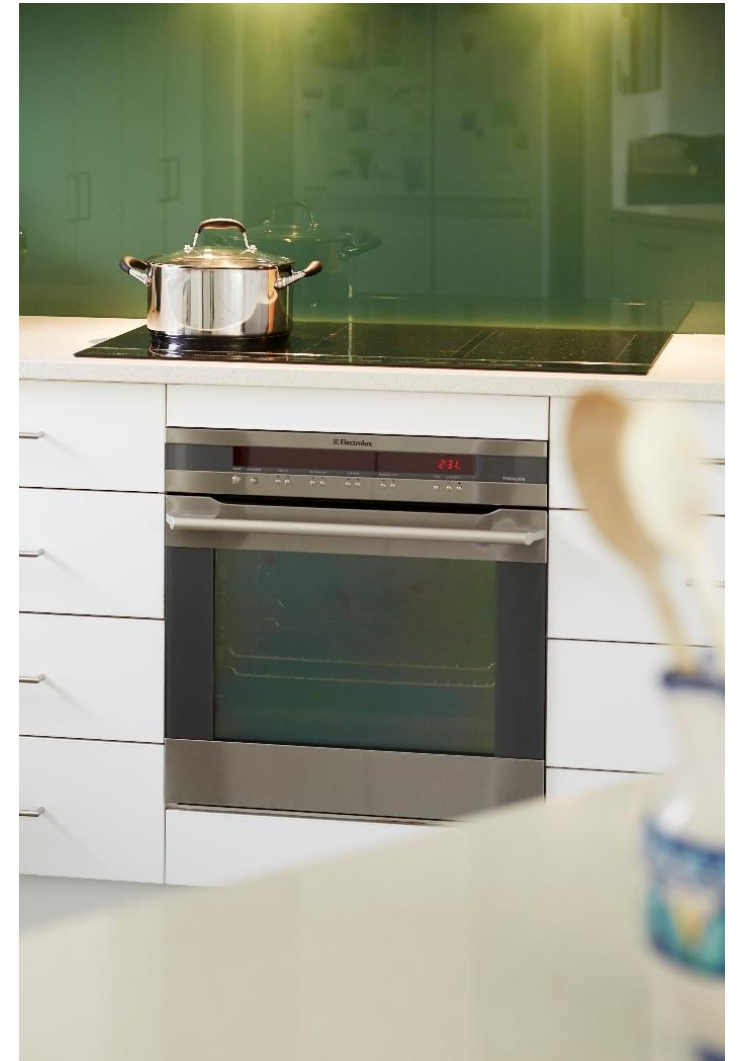


ALL-ELECTRICAL FIT OUT

Heat Pump Hot Water System



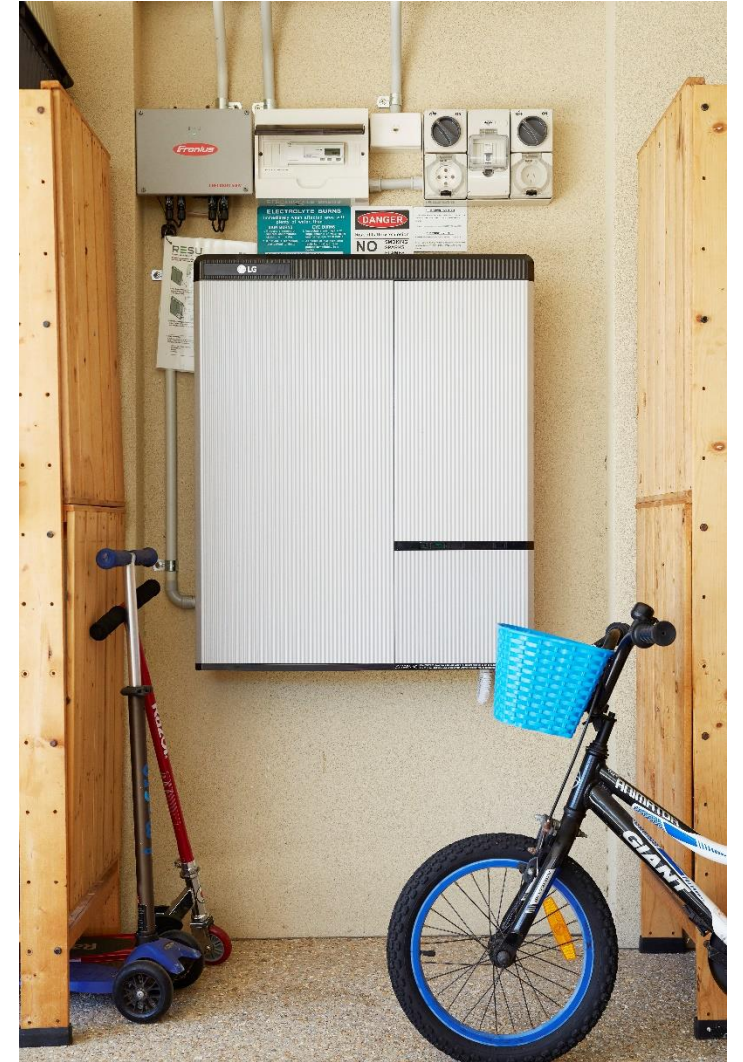
Induction Cooktop



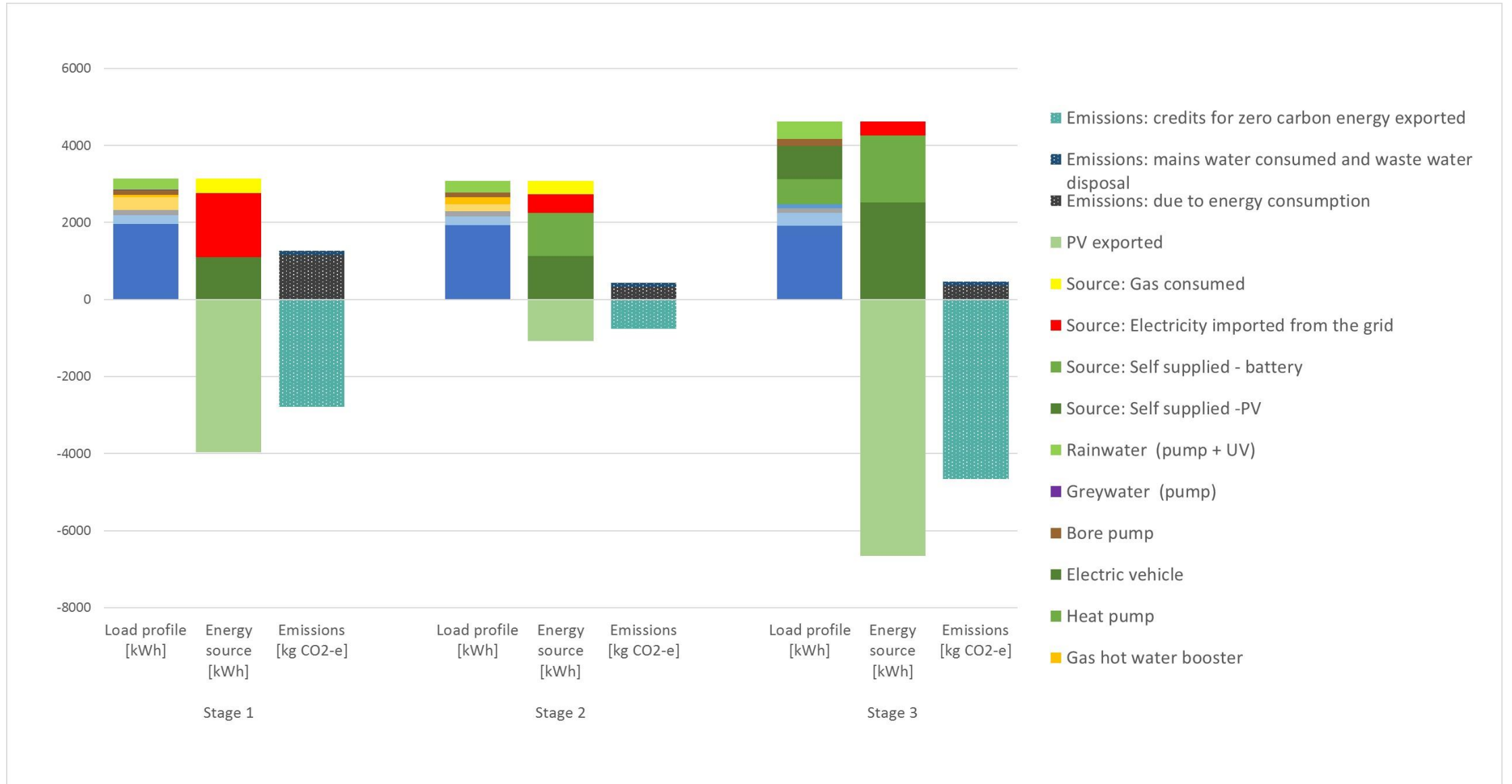
Electric Vehicle



Solar PV + Battery Upgrade



Annual Energy Use & Emissions



COMMUNICATION & ENGAGEMENT

The screenshot shows the 'Josh's House' website. At the top, there's a navigation menu with links: ABOUT THE PROJECT, PARTNERSHIPS, NEWS, RESOURCES, MEDIA, PHOTO ALBUM, CONTACT. Below the menu is a video player for 'JOSH'S HOUSE EPISODE 7 HOUSE' with a play button and a progress bar. The video player includes a 'vimeo' logo and 'HD' indicator. Below the video player is a green banner with the text: 'SHOWCASING THE BENEFITS OF SUSTAINABLE HOUSING TO THE COMMUNITY THROUGH DEMONSTRATION AND INSPIRATION'. There are three small images with text: 'In an industry first, the Water Corporation has partnered with Josh Byrne & Associates to develop guidelines for greywater diversion systems in residential homes. Find out more >'. 'Want to know how Josh's integrated water system will work? Visit our Resources section to download the plan along with whole lot of other free information. Resources >'. 'JOSH'S HOUSE IN THE SUNDAY TIMES: It's been a massive week for Josh's house with a page 18 article in the Sunday Times and the co-story on the Home Magazine. The added exposure has increased interest in the website 22 times over. Our Facebook community has reached 2000 lives and... Resources >'. At the bottom, there are four circular buttons: 'THE PROJECT', 'OUR PARTNERS', 'RECENT NEWS', 'SUBSCRIBE'. Below these is a 'QUICK FIND' section with four columns: 'PLANS' (Home Plans, Sustainability Plans, Landscaping Plans), 'SUSTAINABILITY ASSESSMENTS' (Water Assessment, Energy Assessment, Air Quality Assessment), 'VIDEO ALBUM' (Feature Videos, Video Extras, Video Tutorials), and 'JOIN IN' (Subscribe to our newsletter, Watch us on Facebook, Watch us on Twitter, Read all the Latest News).

The screenshot shows the cover of the Sunday Times magazine 'HOME'. The cover features a photograph of a family (a man, a woman, and two children) sitting on a wooden deck in front of a modern house. The headline reads 'STARRING ROLE' and 'Josh Byrne's new family home rates its sustainable socks off'. Below the headline, there are two sub-headlines: 'INSIDER: Bentled pricing to help you budget' and 'SHOPFRONT: Functional furniture for every room'. At the bottom of the cover, there is a promotional banner for 'FIRST ABODE' with the text: 'DON'T WASTE YOUR TAX REFUND. DOUBLE IT WITH FIRST ABODE.' and 'Take your tax refund towards the deposit for your first home with FIRST ABODE and we will match a DOLLAR FOR DOLLAR* the dream of buying your own home may be a lot closer than you think! CALL FIRST ABODE today to find out how.' There is also a 'To do check list' section with items: 'Tip to Bob', 'Shopping Spree', and 'DOUBLE my tax return and build my first home'. The 'FIRST ABODE' logo is visible in the bottom right corner.





www.joshshouse.com.au

