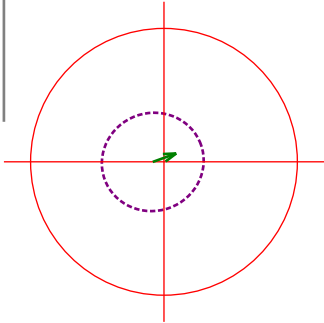


Quality Report for Plate MC103507 Subwell 02

Summary

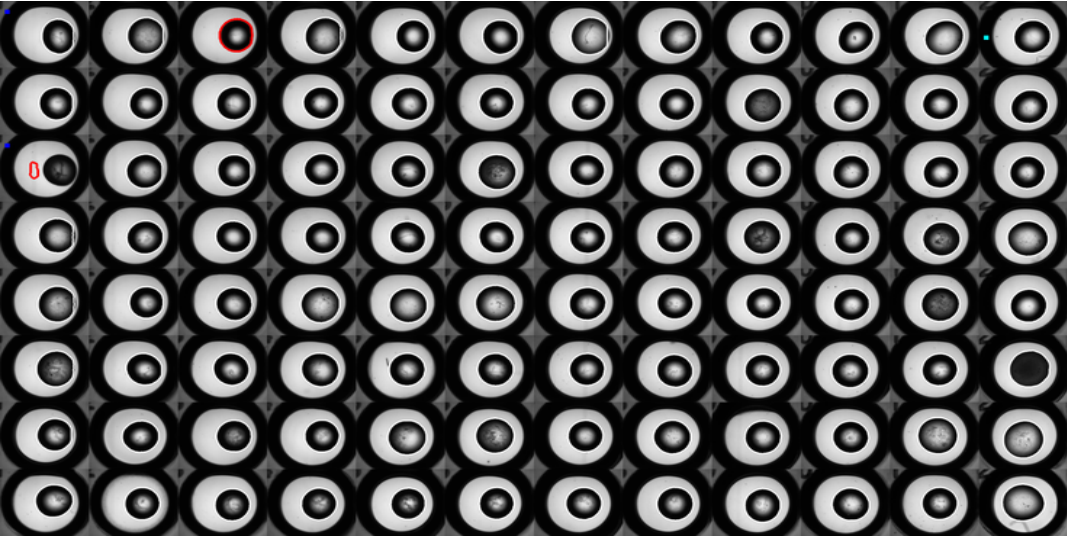
Category	Subwell02
Overall	GOOD
Drops found	96/96
Drops with bubbles	0/96
Drops with splatter	1/96
Small drops	2/96
Offsets	



Drop displacement: 233 [micrometres]
 Drop orientation: 19.9 [degrees]
 Drop eccentricity: 0.27 [0.0=circle, 1.0=line]

Details

Subwell02



- Key:
- Red rim = small drops
 - Green rim = large drops
 - Blue dot = elongated drop
 - Red dot = close to edge
 - Pink dot = bubbles
 - Cyan dot = splatter