



Climate Security and Fisheries Adaptation

Indo-Pacific Island nations face particular challenges under climate change, growing populations and economies. The project is engaging with fisheries and agrifood representatives from government and communities in Fiji and Timor-Leste to jointly understand resource management issues and adaptation needs and co-develop an approach to understand future risks and to develop adaptation options.

Background

In both Timor-Leste and Fiji small-scale artisanal fisheries are a key component of their coastal food systems, supporting livelihoods, income generation and jobs, also contributing to nutrition and food security. As a result, governments in both countries support and incentivise small-scale inshore fisheries and coastal livelihoods, but they have limited capacity to support and deliver on fisheries management objectives. Both countries also have traditional governance systems and customary fisheries and land practices informing management at the local level and connecting to central government policy and actions.

Each country has unique cultural protocols and management arrangements. They also share a common understanding about the connections between people, the land and sea for their wellbeing and common challenges, such as declines in catches due to shorter fishing seasons, water shortages, safety-at-sea concerns, increasing demand for fish and agrifoods to feed growing populations and emerging markets for new species. Therefore, project engagement and activities require context-specific methods to support fisheries adaptation.

The Project Process

The project uses a case study approach focusing on three communities in each country and is developing a three-step process. Working with those communities, local research collaborators and government agencies:

- Understand the contribution of fisheries and coastal resources to the livelihoods of coastal communities.
- Assess climate change risks to fish stocks, fisheries, ocean management, agrifoods, coastal livelihoods and impacts on wellbeing.

- Identify robust adaptation options that will support the fisheries and communities under climate change.

A unifying component of the work is that it is being done with the context of First Nations knowledge exchange and relationships. Torres Strait Islanders from Australia and local traditional knowledge holders in Timor-Leste and Fiji are closely involved in the work and will undertake direct knowledge exchange and relationship building, helping create an Indo-Pacific network of connections.

The Output

The project will ultimately generate ideas and recommendations around risks and adaptation options. Those findings can be woven onto village, regional or national plans as appropriate. In addition, via learning by doing, in-country collaborators and government staff will contribute to the approach being developed and have hands on training on all the tools so that they can be used in other contexts and communities after the project completes.

The project will also co-produce a handbook on the process, and agrifood and fisheries adaptation, that is tailored to the needs of Indo-Pacific Island nations. A handbook anchored on the local traditional concepts of Country, Vanua, Ukani, Solesolevaki, Horupe – the interconnected nature of the human and natural worlds and working together for joint solutions and wellbeing of the entire system.

For further information

CSIRO
Beth Fulton
+61 4 2856 4183
beth.fulton@csiro.au

Leo Dutra
+61 4 2856 4183
leo.dutra@csiro.au

Transcend Oceania
Adi Vasulevu Merewalesi Levu
+679 839 0100
adivasulevu.l@transcendoceania.org

Horupe
Joctan Lopes
+ 44 7465 740412 (WhatsApp)
lopestupuka@gmail.com

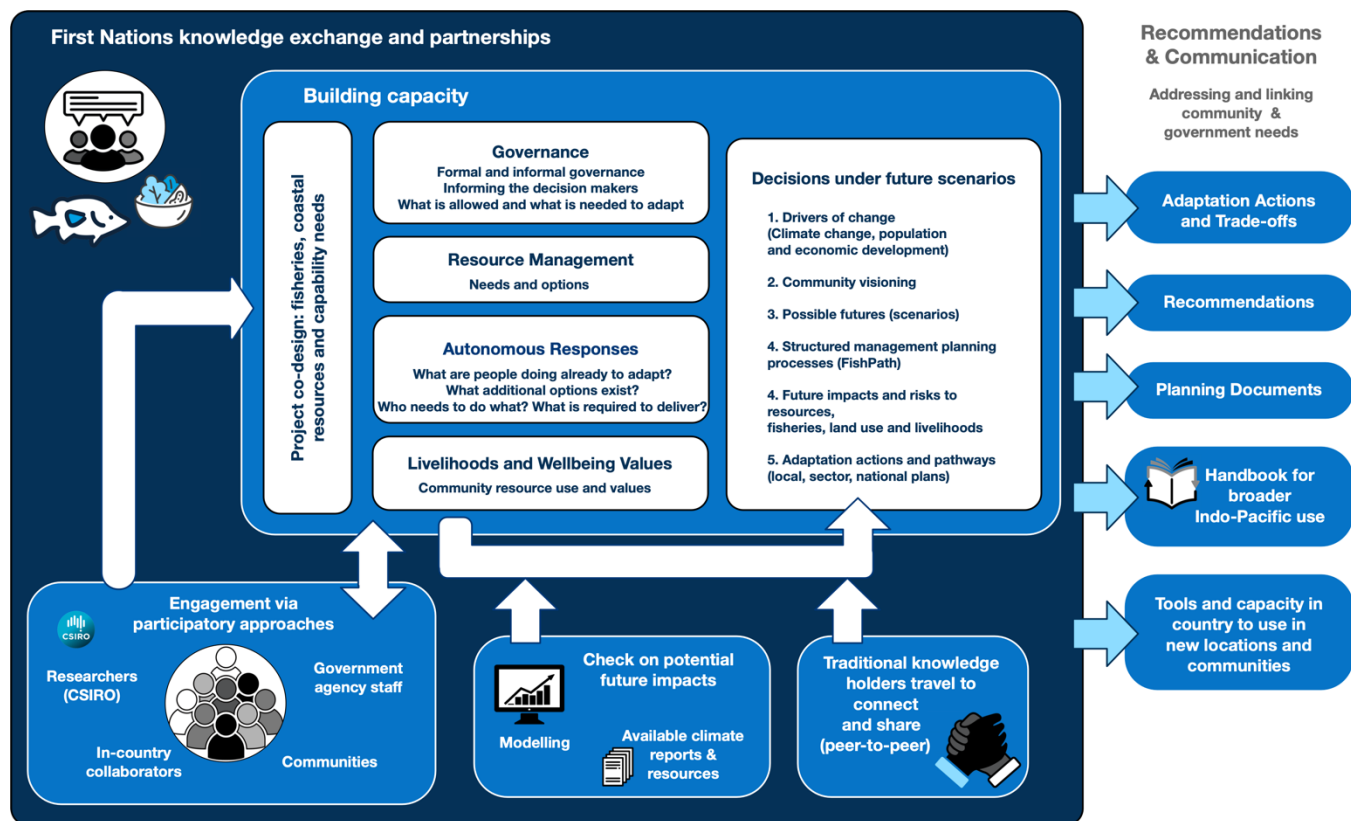
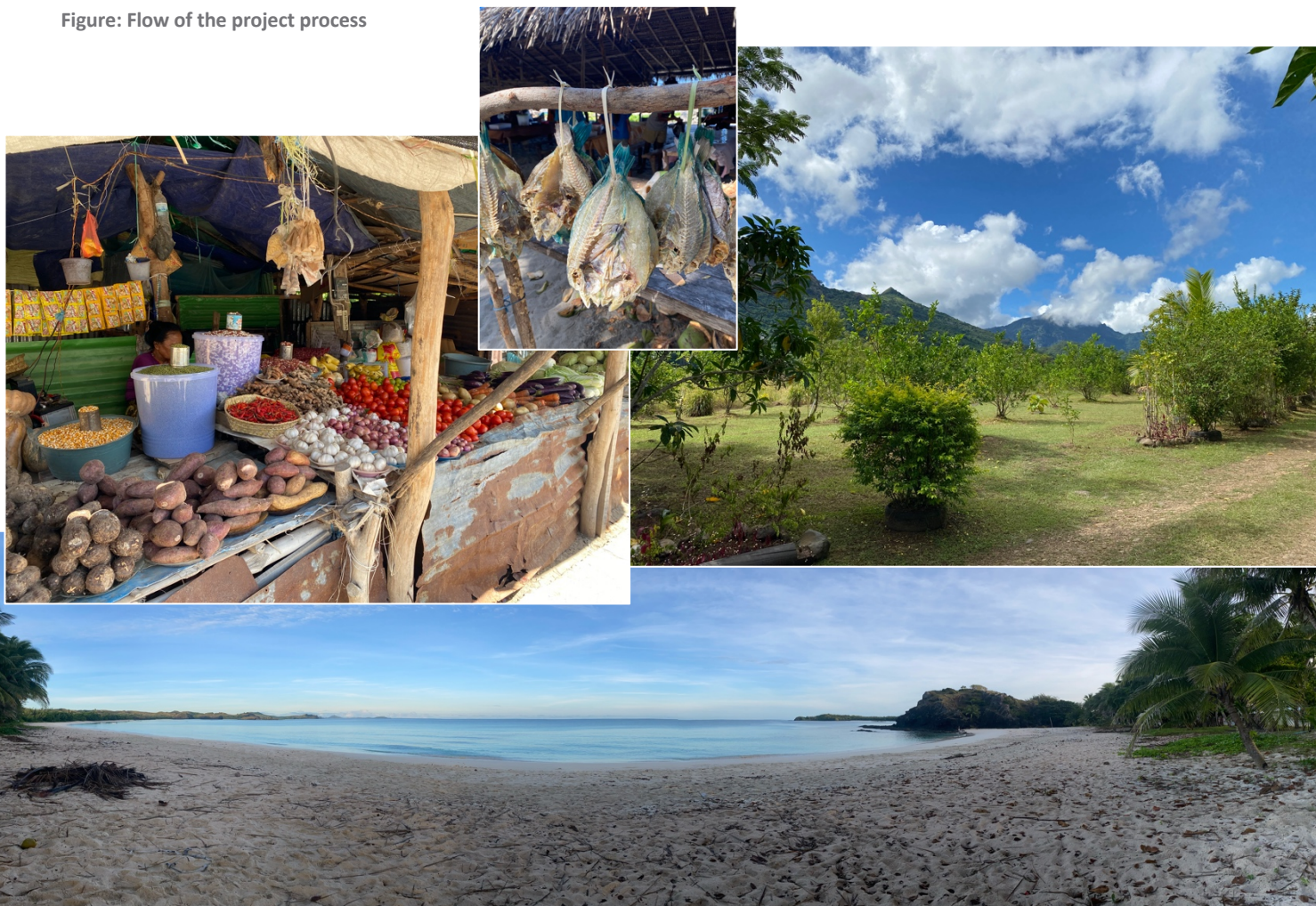


Figure: Flow of the project process



As Australia's national science agency and innovation catalyst, CSIRO is solving the greatest challenges through innovative science and technology.

CSIRO. Unlocking a better future for everyone.

Contact us | 1300 363 400 | csiro.au/contact | csiro.au

Photo credits:
Beth Fulton
Leo Dutra