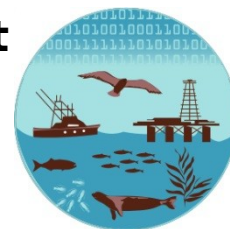




Atlantis Ecosystem Model Summit

7-11 December 2015
 Hyatt Place Waikiki Beach
 Honolulu, Hawaii
 Pua Melia Ballroom



Monday, December 7, 2015		Moderator
0800-0900	Registration	Mariska Weijerman
0900-1200	Opening remarks Welcome - Mike Seki, NOAA Fisheries Science Center Director Background - Jason Link, Beth Fulton, Erik Olsen Keynote presentation <i>Derek Tittensor - Madingley model approach</i> Discussion: Uses of Atlantis	Rusty Brainard
1300-1500	Session 1: Getting on the same page Breakout session: Tuning and data	Bec Gorton
1500-1700	Session 2: Brainstorming about ongoing models Ocean futures: Common runs and scenarios Breakout session: outline paper topics and projects	Erik Olsen Emma Hodgson
1715-1730	Steering Committee check-in	
Tuesday, December 8, 2015		
0900-1100	Session 3: Parameter comparison	Chris Harvey
1100-1200	Session 4: Ocean futures, common runs and scenarios	Erik Olsen
1300-1600	Session 5: Taxa - parameters, data, and comparison	Isaac Kaplan
1600-1700	Session 6: Model Visualization Introduction to VES-V and demo/explore VES-V software	Rob Gamble
1800-2000	Social Event at Waikiki Aquarium	
Wednesday, December 9, 2015		
0900-1100	Session 7: Human Use - parameters, data, and comparison	Ingrid van Putten
1100-1200	Session 8: Ocean futures, common runs and scenarios	Erik Olsen

1300-1500	Session 9: Indicators and Systemic Features - parameters, data, and comparison	Gavin Fay Robert Wildermuth
1500-1700	Session 10: Tips and Best Practices, biology and ecology	Howard Townsend
1715-1730	Steering Committee check-in	
Thursday, December 10, 2015		
0900-1200	Session 11: Model Skill Assessment and Sensitivity Analysis	Mette Mauritzen
1300-1500	Session 12: Model Review Overview - Isaac Kaplan Group discussion	Cameron Ainsworth
1500-1600	Session 13: Revisit Tips and Best Practices	Howard Townsend
1600-1700	Session 14: Ocean futures, common runs and scenarios	Erik Olsen
Friday, December 11, 2015		
0900-1100	Group Discussion Management Strategy Evaluation Global Change simulation Further Atlantis development	Beth Fulton
1100-1200	Session 15: Ocean futures, common runs and scenarios	Erik Olsen
1300-1700	Concluding Vision Presentation <i>Manuel Barange - Perspective on science connection into policy</i> Synthesize, summarize, and discuss dissemination plans Atlantis in context of larger E2E and global modelling efforts	Sarah Gaiches

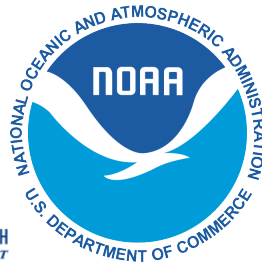
Other logistical details:

- Each day, morning coffee circa 10:30-10:45, lunch circa 12-1, afternoon tea circa 3-3:15
- For each session of the Summit, the aim is to speak on the topic via extant examples while simultaneously demonstrating tools and packages, identifying best practices, and thinking about synthesis products. Each main session will have an introductory presentation or two, then a discussion and/or breakout group to turn into a working session, with running of models if germane. Sessions will be held in the Pua Melia Ballroom.

- Each session will likely have breakout in 2 tracks, one for new/early models and one for ongoing/advanced models. Breakout sessions will be located in rooms Lokahi 1 and 3.

Summit Conveners:

Elizabeth Fulton CSIRO Beth.Fulton@csiro.au
Erik Olsen IMR Erik.Olsen@imr.no
Jason Link NOAA Jason.Link@noaa.gov



Nearby Restaurants

